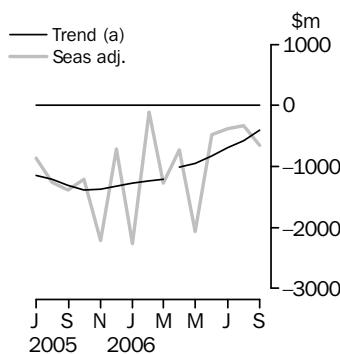


# INTERNATIONAL TRADE IN GOODS AND SERVICES

AUSTRALIA

EMBARGO: 11.30AM (CANBERRA TIME) THURS 2 NOV 2006

## Balance on goods and services



(a) A trend break of \$150m to April 2006 has been applied.

## KEY FIGURES

	July 2006	August 2006	September 2006	Aug 06 to Sep 06
	\$m	\$m	\$m	% change
<b>TREND</b>				
Balance on goods and services	-686	-578	-407	..
Credits (exports of goods & services)	17 837	17 900	17 981	-
Debits (imports of goods & services)	18 523	18 478	18 388	-
<b>SEASONALLY ADJUSTED</b>				
Balance on goods and services	-382	-324	-646	..
Credits (exports of goods & services)	17 786	17 961	17 692	-1
Debits (imports of goods & services)	18 168	18 285	18 338	-

.. not applicable

— nil or rounded to zero (including null cells)

## KEY POINTS

### TREND ESTIMATES

- The provisional trend estimate of the balance on goods and services was a deficit of \$407m in September 2006, a decrease of \$171m on the revised deficit in August.
- Goods and services credits rose \$81m to \$17,981m. Goods and services debits fell \$90m to \$18,388m.

### SEASONALLY ADJUSTED ESTIMATES

- In seasonally adjusted terms, the balance on goods and services was a deficit of \$646m in September, an increase of \$322m on the revised deficit in August.
- Goods and services credits fell \$269m (1%) to \$17,692m. Non-rural and other goods fell \$297m (2%) and rural goods fell \$18m (1%). Services credits rose \$46m (1%).
- Goods and services debits rose \$53m to \$18,338m. Intermediate and other goods rose \$71m (1%), capital goods rose \$19m (1%), while consumption goods fell \$51m (1%). Services debits rose \$14m.

### ORIGINAL ESTIMATES

- In original terms, the September balance on goods and services was a deficit of \$1,274m, an increase of \$473m on the revised deficit in August. Goods and services credits fell \$258m (1%) while goods and services debits rose \$215m (1%).
- In the three months to September, exports of non-rural and other goods were up \$6.3b (21%) and rural goods were up \$0.6b (9%) on the corresponding period in 2005–06.

## INQUIRIES

For further information about these and related statistics, contact the National Information and Referral Service on 1300 135 070 or Tom Jebbink on Canberra (02) 6252 5540.

# NOTES

## FORTHCOMING ISSUES

ISSUE	RELEASE DATE
October 2006	29 November 2006
November 2006	10 January 2007
December 2006	2 February 2007
January 2007	6 March 2007
February 2007	3 April 2007
March 2007	4 May 2007



## REVISIONS

Revisions were made to incorporate the latest available data relating to merchandise trade and the latest administrative data available for international trade in services.

In original terms, these revisions have:

- increased the deficit on goods and services for August 2006 by \$68m
- increased the deficit on goods and services for 2005-06 by \$42m.

## CHANGES TO THIS ISSUE

*Preliminary goods debits chain volume measures and price outcomes*

Details of preliminary goods debits chain volume measures and price outcomes could not be provided in time for the release of this issue. These details will be available from the ABS web site on 16 November 2006 as Additional Information on the summary tab to this publication.

## CHANGES TO SEASONAL ADJUSTMENT

Details of the annual seasonal re-analysis of the monthly series presented in this publication and an explanation of a modified approach to seasonal adjustment for the quarterly Balance of Payment series are presented on page 4.

## AVAILABILITY OF DETAILED SERVICES DATA

*International Trade in Services data cubes*

The financial year trade in services data cubes associated with this issue, by state and by detailed service, have been updated to incorporate historical revisions at the total level released in the August issue of this publication. The financial year country data cubes will be updated with the October issue of this publication. The calendar year data, which are normally updated with the March issue of this publication, will be updated to reflect these revisions as soon as practical, possibly with the November issue.

## FEATURE ARTICLE

A feature article, *Number and Characteristics of Australian Exporters, 2005-06* (cat. no. 5368.0.55.006) was released on 24 October 2006.

Peter Harper  
Acting Australian Statistician

# CONTENTS

page

Changes to seasonal adjustment . . . . .	4
Time series data . . . . .	6

## ANALYSIS

Analysis and comments . . . . .	7
---------------------------------	---

## TABLES

### INTERNATIONAL TRADE IN GOODS AND SERVICES – BALANCE OF PAYMENTS BASIS

<b>1</b> Goods and services, summary, seasonally adjusted and trend estimates . . . . .	12
<b>2</b> Goods and services, summary, original . . . . .	13
<b>3</b> Goods credits, original . . . . .	14
<b>4</b> Goods debits, original . . . . .	15
<b>5</b> Goods credits, seasonally adjusted . . . . .	16
<b>6</b> Goods debits, seasonally adjusted . . . . .	17
<b>7</b> Goods credits, trend estimates . . . . .	18
<b>8</b> Goods debits, trend estimates . . . . .	19
<b>9</b> Services, summary, original . . . . .	20
<b>10</b> Services, summary, seasonally adjusted and trend estimates . . . . .	21
<b>11</b> Services, original, quarterly . . . . .	22

### INTERNATIONAL MERCHANDISE TRADE – RECORDED TRADE BASIS

<b>12</b> International merchandise exports, by commodity . . . . .	23
<b>13</b> International merchandise imports, by commodity . . . . .	26
<b>14</b> International merchandise trade, by country and country groups . . . . .	29
<b>15</b> International merchandise trade, by state . . . . .	30

### OTHER TABLES

<b>16</b> Period average exchange rates per Australian dollar . . . . .	31
---	----

## OTHER INFORMATION

Explanatory Notes . . . . .	32
Abbreviations . . . . .	35
Appendix - Related articles . . . . .	36

## CHANGES TO SEASONAL ADJUSTMENT

### ANNUAL SEASONAL RE-ANALYSIS

Seasonally adjusted and trend monthly goods and services estimates have been revised as a result of the annual seasonal re-analysis, which reviews the seasonal and trading day factors in more detail than possible in the monthly processing cycle.

The re-analysis has changed the treatment of non-monetary gold credits and repairs on goods debits. Clients should refer to footnotes attached to each seasonally adjusted table.

This re-analysis has slightly changed the seasonally adjusted movement between August and September 2006 for goods imports (debits) from a preliminary increase of 0.4% advised in the September 2006 issue of *International Merchandise Imports, Australia* (cat. no. 5439.0) to an increase of 0.3% in this issue.

### IMPLEMENTATION OF TRADING DAY ADJUSTMENT

The ABS is modifying the seasonal adjustment processes applied to quarterly Balance of Payments data to better account for trading day variations. A brief explanation of this modified approach is provided below.

Seasonally adjusted estimates are derived by estimating and removing systematic calendar related effects from the original series. In the balance of payments series, these calendar related effects are known as seasonal influences (e.g. increased imports in the lead-up to Christmas) and trading day influences (arising from the varying length of each month and the varying number of Sundays, Mondays, Tuesdays, etc. in each month). Each influence is estimated by separate seasonal and trading day factors which, when combined, are referred to as the combined adjustment factors.

Trading day, or working day patterns, are purely calendar related behaviour which arise when more activity tends to occur on some days of the week than on others. With monthly series for example, the number of times a particular day of the week occurs in a given month depends on the number of days in the month, and the way the days of the week fall in that month for that year. Thus the different days of the week can occur with different frequencies from month to month and year to year. If more activity tends to occur on some days of the week than on others, the changing frequency of particular days from month to month will have an impact on the behaviour of the original monthly series. The result is a systematic pattern of behaviour which is independent of monthly changes in underlying activity. This effect is termed the trading day effect. The trading day effect is relatively easy to isolate in monthly series because each month generally contains four weeks plus two or three days. The effect of the two or three extra days over four weeks can be quite significant.

However, directly estimating the trading day effect in a quarterly series is difficult because a quarter generally contains 13 weeks plus or minus only one day. An alternative involves applying the trading day variation derived from the corresponding monthly series, which contain more information on trading day activity and is considered a superior methodology. From the September quarter 2006 issue of *Balance of Payments and International Investment Position, Australia* (cat. no. 5302.0), this alternate treatment of trading day variation will be applied to the seasonally adjusted quarterly balance of payments series. As a result, revisions will occur for all previously published seasonally adjusted and trend estimates. These revisions will improve both the historical series and future series.

## CHANGES TO SEASONAL ADJUSTMENT *continued*

---

IMPLEMENTATION OF  
TRADING DAY  
ADJUSTMENT *continued*

These changes will also improve the observed coherence between quarterly seasonally adjusted estimates and the sum of the corresponding monthly series. The ABS is investigating other options for improving this coherence.

## TIME SERIES DATA

### TIME SERIES DATA

Data available free on the ABS web site <<http://www.abs.gov.au>> include longer time series of tables in this publication and additional spreadsheets and data cubes below:

31 Merchandise exports by Broad Economic Category (BEC)

32 Merchandise exports by industry of origin (ANZSIC)

33 Merchandise imports by Broad Economic Category (BEC)

34 Merchandise imports by Balance of Payments Broad Economic Category (BoPBEC)

35 Merchandise imports by industry of origin (ANZSIC)

36 Merchandise exports, state by country and country groups

37 Merchandise imports, state by country and country groups

90 Monthly forward seasonal adjustment factors

Trade in Services data cubes are usually updated on an annual basis - with the March issue of 5368.0 for calendar year and with the September issue for financial year.

Financial year (cat. no. 5368.0.55.003)

1 International trade in services, credits, state by financial year

2 International trade in services, credits, financial year by state

3 International trade in services, debits, state by financial year

4 International trade in services, debits, financial year by state

5 International trade in services, credits, financial year by country and service \*

6 International trade in services, credits, service by financial year and by country \*

7 International trade in services, debits, financial year by country and service \*

8 International trade in services, debits, service by financial year and by country \*

9 International trade in services, financial year by detailed service

Calendar year (cat. no. 5368.0.55.004)

1 International trade in services, credits, state by calendar year

2 International trade in services, credits, calendar year by state

3 International trade in services, debits, state by calendar year

4 International trade in services, debits, calendar year by state

5 International trade in services, credits, calendar year by country and service

6 International trade in services, credits, service by calendar year and by country

7 International trade in services, debits, calendar year by country and service

8 International trade in services, debits, service by calendar year and by country

9 International trade in services, calendar year by detailed service

*\* to be updated with the October 2006 issue.*

## ANALYSIS AND COMMENTS

### BALANCE ON GOODS AND SERVICES

The trend estimate of the balance on goods and services in September 2006 was a deficit of \$407m, a decrease of \$171m on the deficit in August.

In seasonally adjusted terms, the balance on goods and services in September 2006 was a deficit of \$646m, an increase of \$322m on the deficit in August.

The sum of the seasonally adjusted balances for the three months to September 2006 was a deficit of \$1,352m, a decrease of \$1,918m on the deficit of \$3,270m for the three months to June 2006. However, if the seasonal factors (based on the modified approach described on page 4) used in compiling quarterly Balance of Payments are applied, the September quarter 2006 deficit was \$1,271m, a decrease of \$2,058m on the revised June quarter 2006 deficit of \$3,329m.

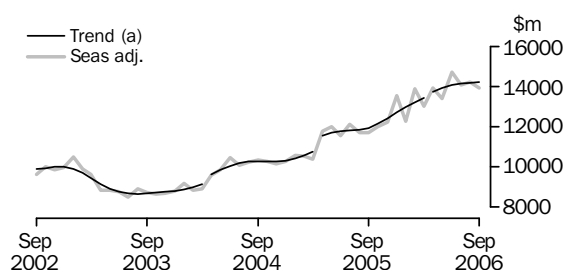
### EXPORTS OF GOODS AND SERVICES

The trend estimate of goods and services credits rose \$81m between August and September to \$17,981m.

In seasonally adjusted terms, goods and services credits fell \$269m (1%) to \$17,692m. Non-rural goods fell \$195m (2%), other goods fell \$102m (10%) and rural goods fell \$18m (1%). Services credits rose \$46m (1%).

#### Exports of goods

#### GOODS CREDITS



(a) Trend breaks of \$300m to April 2004, \$600m to April 2005 and \$150m to April 2006 have been applied.

#### RURAL GOODS

The trend estimate of rural goods exports rose \$11m to \$2,231m.

In seasonally adjusted terms, exports of rural goods fell \$18m (1%) to \$2,232m.

The seasonally adjusted components contributing to this fall were:

- other rural, down \$21m (2%)
- cereal grains and cereal preparations, down \$12m (2%)
- meat and meat preparations, down \$6m (1%).

Partly offsetting these effects was wool and sheepskins, up \$21m (11%).

In original terms, exports of rural goods rose \$30m (1%) to \$2,283m.

## ANALYSIS AND COMMENTS *continued*

### NON-RURAL GOODS

The trend estimate of non-rural goods exports rose \$96m (1%) to \$10,944m.

In seasonally adjusted terms, exports of non-rural goods fell \$195m (2%) to \$10,722m.

The seasonally adjusted components contributing to the fall were:

- coal, coke and briquettes, down \$152m (8%), largely due a fall in volumes of coal exports
- transport equipment, down \$68m (16%)
- metals (excl. non-monetary gold), down \$44m (4%)
- metal ores and minerals, down \$20m (1%).

Partly offsetting these effects were:

- other non-rural, up \$69m (6%)
- other mineral fuels, up \$11m (1%).

In original terms, exports of non-rural goods rose \$3m to \$11,046m.

### OTHER GOODS

The trend estimate of other goods exports fell \$51m (5%) to \$1,057m.

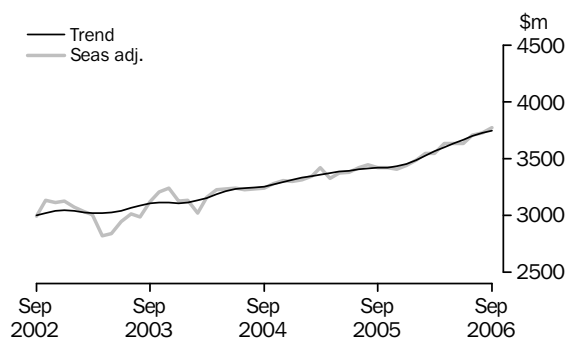
In seasonally adjusted terms, exports of other goods fell \$102m (10%) to \$968m.

The main component contributing to the fall in the seasonally adjusted series was non-monetary gold, down \$115m (12%).

In original terms, exports of other goods fell \$110m (10%) to \$977m.

### Exports of services

### SERVICES CREDITS



In trend terms, services credits rose \$25m (1%) to \$3,749m.

Seasonally adjusted, services credits rose \$46m (1%) to \$3,770m.

All components contributed to the rise in the seasonally adjusted series with:

- travel services, up \$33m (2%)
- other services, up \$10m (1%)
- transportation services, up \$3m.

Seasonally adjusted, tourism related services credits rose \$40m (2%) to \$2,407m.



## ANALYSIS AND COMMENTS *continued*

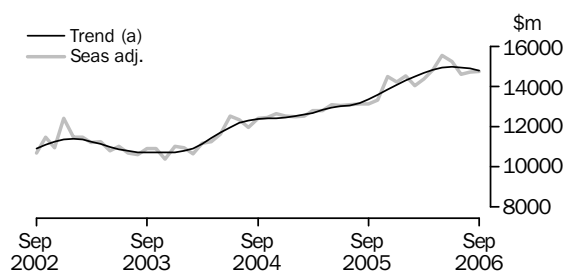
### IMPORTS OF GOODS AND SERVICES

The trend estimate of goods and services debits fell \$90m between August and September to \$18,388m.

In seasonally adjusted terms, goods and services debits rose \$53m to \$18,338m. Other goods rose \$133m (30%) and capital goods rose \$19m (1%), while intermediate and other merchandise goods fell \$62m (1%) and consumption goods fell \$51m (1%). Services debits rose \$14m.

#### *Imports of goods*

### GOODS DEBITS



(a) Trend estimates exclude abnormal imports of aircraft in December 2002.

### CONSUMPTION GOODS

The trend estimate of imports of consumption goods fell \$2m to \$4,412m.

In seasonally adjusted terms, imports of consumption goods fell \$51m (1%) to \$4,362m.

The main component contributing to the fall in the seasonally adjusted estimates was non-industrial transport equipment, down \$80m (7%).

Partly offsetting this effect were:

- consumption goods n.e.s., up \$21m (2%)
- textiles, clothing and footwear, up \$8m (1%).

In original terms, imports of consumption goods rose \$48m (1%) to \$4,812m.

### CAPITAL GOODS

The trend estimate of imports of capital goods fell \$48m (1%) to \$3,178m.

In seasonally adjusted terms, imports of capital goods rose \$19m (1%) to \$3,256m.

The main components contributing to the rise in the seasonally adjusted estimates were:

- capital goods n.e.s., up \$64m (15%)
- industrial transport equipment n.e.s., up \$58m (13%)
- telecommunications equipment, up \$51m (13%).

Largely offsetting these effects were:

- civil aircraft, down \$114m
- machinery and industrial equipment, down \$48m (4%).

In original terms, imports of capital goods fell \$85m (3%) to \$3,299m.

## ANALYSIS AND COMMENTS *continued*

---

### INTERMEDIATE AND OTHER MERCHANDISE GOODS

The trend estimate of imports of intermediate and other merchandise goods rose \$10m to \$6,609m.

In seasonally adjusted terms, imports of intermediate and other merchandise goods fell \$62m (1%) to \$6,536m.

The main components contributing to the fall in the seasonally adjusted estimates were:

- fuels and lubricants, down \$187m (10%), with crude petroleum imports down 4% in both volume and price
- primary industrial supplies n.e.s., down \$25m (20%).

Partly offsetting these effects were:

- other merchandise goods, up \$53m (62%)
- processed industrial supplies n.e.s., up \$37m (3%)
- iron and steel, up \$21m (8%)
- other parts for capital goods, up \$19m (2%).

In original terms, imports of intermediate and other merchandise goods fell \$232m (3%) to \$6,607m.

### OTHER GOODS

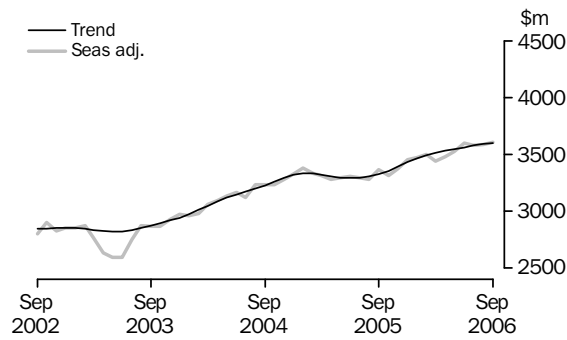
The trend estimate of imports of other goods fell \$60m (9%) to \$586m.

In both original and seasonally adjusted terms, other goods imports rose \$133m (30%) to \$580m.

The component contributing to the rise in the estimates was non-monetary gold, up \$197m (85%). This was partly offset by a fall in goods for processing, down \$66m to \$1m.

Imports of services

SERVICES DEBITS



In trend terms, services debits rose \$10m to \$3,603m.

Seasonally adjusted, services debits rose \$14m to \$3,604m.

The components contributing to the rise in the seasonally adjusted estimates were:

- travel services, up \$20m (2%)
- other services, up \$6m (1%).

Partly offsetting these effects was transportation services, down \$12m (1%).

Seasonally adjusted, tourism related services debits rose \$59m (3%) to \$1,923m.

## GOODS AND SERVICES(a), Summary: Seasonally Adjusted and Trend Estimates

Months	BALANCE	CREDITS					DEBITS					
	On goods and services	Total goods and services	Total goods	Rural goods(b)	Non-rural and other goods(b)	Total services	Total goods and services	Total goods	Con-sumption goods	Capital goods	Inter-mediate and other goods	Total services
	\$m	\$m	\$m	\$m	\$m	\$m	\$m	\$m	\$m	\$m	\$m	\$m
SEASONALLY ADJUSTED												
<b>2005</b>												
July	-863	15 534	12 115	2 107	10 008	3 419	-16 397	-13 104	-4 024	-3 002	-6 078	-3 293
August	-1 264	15 162	11 718	2 035	9 683	3 444	-16 426	-13 143	-4 111	-2 947	-6 085	-3 283
September	-1 382	15 122	11 705	2 005	9 700	3 417	-16 504	-13 140	-4 046	-2 997	-6 097	-3 364
October	-1 209	15 417	11 994	2 039	9 955	3 423	-16 626	-13 312	-3 890	-3 350	-6 072	-3 314
November	-2 218	15 638	12 231	2 006	10 225	3 407	-17 856	-14 481	-4 335	-3 661	-6 485	-3 375
December	-713	16 966	13 528	2 119	11 409	3 438	-17 679	-14 224	-4 287	-3 504	-6 433	-3 455
<b>2006</b>												
January	-2 263	15 738	12 251	2 158	10 093	3 487	-18 001	-14 525	-4 233	-3 663	-6 629	-3 476
February	-108	17 425	13 877	2 127	11 750	3 548	-17 533	-14 035	-4 113	-3 169	-6 753	-3 498
March	-1 272	16 549	12 999	2 247	10 752	3 550	-17 821	-14 384	-4 193	-3 595	-6 596	-3 437
April	-728	17 559	13 926	2 156	11 770	3 633	-18 287	-14 806	-4 396	-3 346	-7 064	-3 481
May	-2 060	17 008	13 372	2 124	11 248	3 636	-19 068	-15 543	-4 365	-3 460	-7 718	-3 525
June	-482	18 361	14 725	2 151	12 574	3 636	-18 843	-15 243	-4 416	-3 381	-7 446	-3 600
July	-382	17 786	14 080	2 236	11 844	3 706	-18 168	-14 588	-4 405	-3 044	-7 139	-3 580
August	-324	17 961	14 237	2 250	11 987	3 724	-18 285	-14 695	-4 413	-3 237	-7 045	-3 590
September	-646	17 692	13 922	2 232	11 690	3 770	-18 338	-14 734	-4 362	-3 256	-7 116	-3 604
TREND ESTIMATES												
<b>2005</b>												
July	-1 145	15 208	11 802	2 062	9 740	3 406	-16 353	-13 060	-3 994	-3 027	-6 039	-3 293
August	-1 211	15 256	11 843	2 048	9 795	3 413	-16 467	-13 161	-4 030	-3 087	-6 044	-3 306
September	-1 309	15 361	11 943	2 036	9 907	3 418	-16 670	-13 344	-4 078	-3 186	-6 080	-3 326
October	-1 380	15 558	12 136	2 036	10 100	3 422	-16 938	-13 583	-4 121	-3 308	-6 154	-3 355
November	-1 368	15 850	12 418	2 058	10 360	3 432	-17 218	-13 826	-4 156	-3 423	-6 247	-3 392
December	-1 317	16 169	12 714	2 094	10 620	3 455	-17 486	-14 055	-4 186	-3 499	-6 370	-3 431
<b>2006</b>												
January	-1 268	16 472	12 985	2 129	10 856	3 487	-17 740	-14 274	-4 215	-3 525	-6 534	-3 466
February	-1 228	16 748	13 221	2 154	11 067	3 527	-17 976	-14 483	-4 242	-3 504	-6 737	-3 493
March	-1 206	16 990	13 424	2 167	11 257	3 566	-18 196	-14 681	-4 274	-3 456	-6 951	-3 515
April(c)	-1 013	17 348	13 746	2 171	11 575	3 602	-18 361	-14 829	-4 309	-3 399	-7 121	-3 532
May	-945	17 542	13 907	2 176	11 731	3 635	-18 487	-14 940	-4 350	-3 354	-7 236	-3 547
June	-829	17 713	14 047	2 185	11 862	3 666	-18 542	-14 980	-4 386	-3 308	-7 286	-3 562
July	-686	17 837	14 141	2 202	11 939	3 696	-18 523	-14 945	-4 406	-3 261	-7 278	-3 578
August	-578	17 900	14 176	2 220	11 956	3 724	-18 478	-14 885	-4 414	-3 226	-7 245	-3 593
September	-407	17 981	14 232	2 231	12 001	3 749	-18 388	-14 785	-4 412	-3 178	-7 195	-3 603

(a) For sign conventions, see paragraph 9 of the Explanatory Notes.

(b) For all time periods, estimates for sugar, sugar preparations and honey are included in Non-rural and other goods.

(c) A trend break of \$150m has been applied to Non-rural and other goods credits in April 2006.

## GOODS AND SERVICES(a), Summary: Original

	BALANCE	CREDITS					DEBITS					
	<i>On goods and services</i>	<i>Total goods and services</i>	<i>Total goods</i>	<i>Rural goods(b)</i>	<i>Non-rural and other goods(b)</i>	<i>Total services</i>	<i>Total goods and services</i>	<i>Total goods</i>	<i>Consumption goods</i>	<i>Capital goods</i>	<i>Intermediate and other goods</i>	<i>Total services</i>
	\$m	\$m	\$m	\$m	\$m	\$m	\$m	\$m	\$m	\$m	\$m	\$m
FINANCIAL YEAR												
<b>2003-04</b>	<b>-21 509</b>	147 205	109 459	24 577	84 882	37 746	-168 714	-133 018	-42 917	-32 118	-57 983	-35 696
<b>2004-05</b>	<b>-22 626</b>	167 562	127 867	25 687	102 180	39 695	-190 188	-150 873	-47 143	-35 967	-67 763	-39 315
<b>2005-06</b>	<b>-14 533</b>	196 332	154 383	25 289	129 094	41 949	-210 865	-169 744	-50 322	-39 990	-79 432	-41 121
MONTHS												
<b>2005</b>												
July	<b>-565</b>	15 861	12 394	2 095	10 299	3 467	-16 426	-12 959	-4 022	-2 961	-5 976	-3 467
August	<b>-1 722</b>	15 545	12 032	2 046	9 986	3 513	-17 267	-14 007	-4 492	-3 157	-6 358	-3 260
September	<b>-2 379</b>	15 170	11 883	2 035	9 848	3 287	-17 549	-13 860	-4 544	-3 068	-6 248	-3 689
October	<b>-936</b>	16 232	12 685	2 109	10 576	3 547	-17 168	-13 748	-4 221	-3 437	-6 090	-3 420
November	<b>-2 986</b>	15 697	12 214	2 020	10 194	3 483	-18 683	-15 415	-4 852	-3 934	-6 629	-3 268
December	<b>80</b>	17 576	14 142	2 252	11 890	3 434	-17 496	-13 877	-4 128	-3 556	-6 193	-3 619
<b>2006</b>												
January	<b>-2 775</b>	14 399	10 941	1 818	9 123	3 458	-17 174	-13 562	-3 806	-3 267	-6 489	-3 612
February	<b>309</b>	16 103	12 484	2 025	10 459	3 619	-15 794	-12 740	-3 630	-2 677	-6 433	-3 054
March	<b>-949</b>	16 967	13 313	2 329	10 984	3 654	-17 916	-14 581	-4 128	-3 541	-6 912	-3 335
April	<b>255</b>	17 395	13 713	2 147	11 566	3 682	-17 140	-13 786	-3 945	-3 111	-6 730	-3 357
May	<b>-2 031</b>	17 200	13 742	2 245	11 497	3 458	-19 231	-15 864	-4 266	-3 631	-7 967	-3 364
June	<b>-834</b>	18 187	14 840	2 168	12 672	3 347	-19 021	-15 345	-4 288	-3 650	-7 407	-3 676
July	<b>97</b>	18 214	14 459	2 198	12 261	3 755	-18 117	-14 387	-4 385	-3 017	-6 985	-3 730
August	<b>-801</b>	18 193	14 383	2 253	12 130	3 810	-18 994	-15 434	-4 764	-3 384	-7 286	-3 560
September	<b>-1 274</b>	17 935	14 306	2 283	12 023	3 629	-19 209	-15 298	-4 812	-3 299	-7 187	-3 911
FINANCIAL YEAR TO DATE												
<b>3 months ended</b>												
<b>September</b>												
2005	<b>-4 666</b>	46 576	36 309	6 176	30 133	10 267	-51 242	-40 826	-13 058	-9 186	-18 582	-10 416
2006	<b>-1 978</b>	54 342	43 148	6 734	36 414	11 194	-56 320	-45 119	-13 961	-9 700	-21 458	-11 201

(a) For sign conventions, see paragraph 9 of the Explanatory Notes.

(b) For all time periods, estimates for sugar, sugar preparations and honey are included in Non-rural and other goods.

							3 MONTHS ENDED		Change
							SEPTEMBER		
	2003-04	2004-05	2005-06	Jul 2006	Aug 2006	Sep 2006	2005	2006	
	\$m	\$m	\$m	\$m	\$m	\$m	\$m	\$m	%
<b>Total goods credits</b>	<b>109 459</b>	<b>127 867</b>	<b>154 383</b>	<b>14 459</b>	<b>14 383</b>	<b>14 306</b>	<b>36 309</b>	<b>43 148</b>	<b>18.8</b>
<i>Rural goods</i>	24 577	25 687	25 289	2 198	2 253	2 283	6 176	6 734	9.0
Meat and meat preparations	5 758	6 937	6 709	579	595	631	1 672	1 805	8.0
Cereal grains and cereal preparations	5 093	5 159	4 852	445	527	470	1 011	1 442	42.6
Wool and sheepskins	2 778	2 838	2 544	226	140	246	580	612	5.5
Other rural(a)	10 948	10 753	11 184	948	991	936	2 913	2 875	-1.3
<i>Non-rural goods</i>	76 908	94 328	118 121	11 255	11 043	11 046	28 115	33 344	18.6
Metal ores and minerals	14 843	19 854	28 850	2 996	2 820	2 697	6 028	8 513	41.2
Coal, coke and briquettes	11 002	17 236	24 354	2 029	1 986	1 816	6 032	5 831	-3.3
Other mineral fuels	8 777	11 151	13 251	1 531	1 266	1 444	3 543	4 241	19.7
Metals (excl. non-monetary gold)	7 757	8 668	11 268	1 178	1 164	1 096	2 238	3 438	53.6
Machinery	6 837	7 488	8 087	748	741	752	2 075	2 241	8.0
Transport equipment	5 155	4 943	5 314	298	429	390	1 408	1 117	-20.7
Other manufactures	13 279	14 043	14 923	1 377	1 320	1 442	3 799	4 139	8.9
Other non-rural (incl. sugar and beverages)	9 258	10 945	12 074	1 098	1 317	1 409	2 992	3 824	27.8
<i>Other goods</i>	7 974	7 852	10 973	1 006	1 087	977	2 018	3 070	52.1
Goods for processing	97	241	364	68	11	36	25	115	360.0
Repairs on goods	75	67	73	7	6	5	21	18	-14.3
Goods procured in ports by carriers	771	1 072	1 420	111	148	129	343	388	13.1
Non-monetary gold	7 031	6 472	9 116	820	922	807	1 629	2 549	56.5

(a) For all time periods, estimates for sugar, sugar preparations and honey are included in Other non-rural.

## GOODS DEBITS (a): Original

							3 MONTHS ENDED		Change
							SEPTEMBER		
	2003-04	2004-05	2005-06	Jul 2006	Aug 2006	Sep 2006	2005	2006	
	\$m	\$m	\$m	\$m	\$m	\$m	\$m	\$m	%
<b>Total goods debits</b>	<b>-133 018</b>	<b>-150 873</b>	<b>-169 744</b>	<b>-14 387</b>	<b>-15 434</b>	<b>-15 298</b>	<b>-40 826</b>	<b>-45 119</b>	<b>10.5</b>
<i>Consumption goods</i>	-42 917	-47 143	-50 322	-4 385	-4 764	-4 812	-13 058	-13 961	6.9
Food and beverages, mainly for consumption	-5 167	-5 767	-6 171	-513	-578	-591	-1 519	-1 682	10.7
Household electrical items	-3 793	-4 024	-4 291	-339	-411	-431	-1 088	-1 181	8.5
Non-industrial transport equipment	-12 325	-13 003	-13 589	-1 194	-1 196	-1 253	-3 534	-3 643	3.1
Textiles, clothing and footwear	-5 078	-5 811	-6 366	-589	-647	-596	-1 656	-1 832	10.6
Toys, books and leisure goods	-3 594	-3 740	-4 055	-324	-404	-442	-1 129	-1 170	3.6
Consumption goods n.e.s.	-12 960	-14 798	-15 850	-1 426	-1 528	-1 499	-4 132	-4 453	7.8
<i>Capital goods</i>	-32 118	-35 967	-39 990	-3 017	-3 384	-3 299	-9 186	-9 700	5.6
Machinery and industrial equipment	-11 069	-13 409	-14 326	-1 132	-1 362	-1 232	-3 624	-3 726	2.8
ADP equipment	-5 138	-5 761	-6 073	-557	-504	-519	-1 486	-1 580	6.3
Telecommunications equipment	-4 105	-4 568	-5 334	-456	-417	-450	-1 195	-1 323	10.7
Civil aircraft	-3 061	-2 496	-2 967	-55	-232	-118	-350	-405	15.7
Industrial transport equipment n.e.s.	-4 139	-4 981	-5 491	-355	-414	-482	-1 318	-1 251	-5.1
Capital goods n.e.s.	-4 606	-4 752	-5 799	-462	-455	-498	-1 213	-1 415	16.7
<i>Intermediate and other merchandise goods</i>	-54 266	-63 730	-72 756	-6 247	-6 839	-6 607	-17 241	-19 693	14.2
Food and beverages, mainly for industry	-625	-659	-651	-49	-78	-72	-167	-199	19.2
Primary industrial supplies n.e.s.	-1 079	-1 052	-1 193	-79	-159	-113	-298	-351	17.8
Fuels and lubricants	-9 918	-14 720	-21 041	-1 803	-1 967	-1 780	-4 387	-5 550	26.5
Parts for transport equipment	-6 547	-7 008	-7 316	-670	-730	-699	-1 806	-2 099	16.2
Parts for ADP equipment	-1 812	-1 787	-1 857	-147	-159	-181	-445	-487	9.4
Other parts for capital goods	-8 548	-9 485	-10 155	-911	-950	-957	-2 527	-2 818	11.5
Organic and inorganic chemicals	-3 047	-3 622	-4 136	-332	-337	-339	-959	-1 008	5.1
Paper and paperboard	-2 242	-2 313	-2 302	-192	-221	-226	-598	-639	6.9
Textile yarn and fabrics	-1 574	-1 452	-1 362	-122	-129	-119	-350	-370	5.7
Iron and steel	-2 026	-3 008	-3 239	-243	-288	-278	-910	-809	-11.1
Plastics	-2 177	-2 428	-2 517	-221	-248	-241	-611	-710	16.2
Processed industrial supplies n.e.s.	-13 437	-15 142	-15 857	-1 323	-1 488	-1 464	-3 965	-4 275	7.8
Other merchandise goods	-1 234	-1 054	-1 130	-155	-85	-138	-218	-378	73.4
<i>Other goods</i>	-3 717	-4 033	-6 676	-738	-447	-580	-1 341	-1 765	31.6
Goods for processing	-64	-243	-445	-139	-67	-1	-65	-207	218.5
Repairs on goods	-219	-182	-115	-14	-13	-17	-35	-44	25.7
Goods procured in ports by carriers	-802	-1 049	-1 406	-134	-134	-132	-327	-400	22.3
Non-monetary gold	-2 632	-2 559	-4 710	-451	-233	-430	-914	-1 114	21.9

(a) For sign conventions, see paragraph 9 of the Explanatory Notes.

## GOODS CREDITS: Seasonally Adjusted

	Dec 2005	Jan 2006	Feb 2006	Mar 2006	Apr 2006	May 2006	Jun 2006	Jul 2006	Aug 2006	Sep 2006
	\$m	\$m	\$m	\$m	\$m	\$m	\$m	\$m	\$m	\$m
<b>Total goods credits</b>	<b>13 528</b>	<b>12 251</b>	<b>13 877</b>	<b>12 999</b>	<b>13 926</b>	<b>13 372</b>	<b>14 725</b>	<b>14 080</b>	<b>14 237</b>	<b>13 922</b>
<i>Rural goods</i>	2 119	2 158	2 127	2 247	2 156	2 124	2 151	2 236	2 250	2 232
Meat and meat preparations	572	541	562	576	567	555	581	582	615	609
Cereal grains and cereal preparations	406	441	431	478	422	467	415	476	518	506
Wool and sheepskins	202	219	205	239	245	188	221	233	199	220
Other rural(a)	939	957	929	954	922	914	934	945	918	897
<i>Non-rural goods</i>	10 310	9 202	10 792	9 871	10 398	10 089	11 149	10 830	10 917	10 722
Metal ores and minerals	2 734	1 986	2 865	2 280	2 595	2 651	3 203	2 849	2 863	2 843
Coal, coke and briquettes	2 010	2 041	2 070	2 095	2 055	1 939	1 988	1 984	1 999	1 847
Other mineral fuels	1 129	984	1 385	1 099	1 211	966	1 221	1 292	1 220	1 231
Metals (excl. non-monetary gold)	1 079	898	1 007	970	1 048	1 146	1 216	1 189	1 199	1 155
Machinery	658	651	705	698	681	673	715	710	715	719
Transport equipment	425	384	418	442	443	405	421	324	417	349
Other manufactures	1 286	1 277	1 273	1 242	1 323	1 153	1 273	1 355	1 312	1 317
Other non-rural (incl. sugar and beverages)	989	981	1 069	1 045	1 042	1 156	1 112	1 127	1 192	1 261
<i>Other goods</i>	1 099	891	958	881	1 372	1 159	1 425	1 014	1 070	968
Goods for processing(b)	4	3	34	58	80	86	66	68	11	36
Repairs on goods(b)	11	4	4	6	5	6	5	7	6	5
Goods procured in ports by carriers	106	117	125	133	132	134	132	119	131	120
Non-monetary gold(b)	978	767	795	684	1 155	933	1 222	820	922	807

(a) For all time periods, estimates for sugar, sugar preparations and honey are included in Other non-rural.

(b) This component is not seasonally adjusted.



## GOODS DEBITS(a): Seasonally Adjusted

	Dec 2005	Jan 2006	Feb 2006	Mar 2006	Apr 2006	May 2006	Jun 2006	Jul 2006	Aug 2006	Sep 2006
	\$m	\$m	\$m	\$m	\$m	\$m	\$m	\$m	\$m	\$m
<b>Total goods debits</b>	<b>-14 224</b>	<b>-14 525</b>	<b>-14 035</b>	<b>-14 384</b>	<b>-14 806</b>	<b>-15 543</b>	<b>-15 243</b>	<b>-14 588</b>	<b>-14 695</b>	<b>-14 734</b>
<i>Consumption goods</i>	-4 287	-4 233	-4 113	-4 193	-4 396	-4 365	-4 416	-4 405	-4 413	-4 362
Food and beverages, mainly for consumption	-513	-508	-524	-518	-539	-545	-537	-554	-561	-560
Household electrical items	-363	-374	-368	-378	-407	-377	-371	-360	-379	-376
Non-industrial transport equipment	-1 134	-1 096	-1 055	-1 096	-1 136	-1 169	-1 212	-1 168	-1 228	-1 148
Textiles, clothing and footwear	-572	-560	-501	-537	-565	-551	-566	-563	-549	-557
Toys, books and leisure goods	-334	-333	-354	-346	-374	-355	-351	-344	-348	-352
Consumption goods n.e.s.	-1 371	-1 362	-1 311	-1 318	-1 375	-1 368	-1 379	-1 416	-1 348	-1 369
<i>Capital goods</i>	-3 504	-3 663	-3 169	-3 595	-3 346	-3 460	-3 381	-3 044	-3 237	-3 256
Machinery and industrial equipment	-1 188	-1 169	-1 211	-1 276	-1 296	-1 221	-1 299	-1 210	-1 224	-1 176
ADP equipment	-517	-559	-518	-522	-510	-472	-526	-532	-525	-533
Telecommunications equipment	-444	-566	-488	-493	-498	-454	-452	-447	-401	-452
Civil aircraft(b)	-335	-515	-60	-255	-100	-232	-189	-55	-232	-118
Industrial transport equipment n.e.s.	-476	-366	-484	-581	-447	-428	-437	-315	-432	-490
Capital goods n.e.s.	-544	-488	-408	-468	-495	-653	-478	-485	-423	-487
<i>Intermediate and other merchandise goods</i>	-5 945	-5 993	-6 256	-6 049	-6 271	-6 772	-6 698	-6 401	-6 598	-6 536
Food and beverages, mainly for industry	-51	-48	-49	-53	-57	-57	-57	-45	-77	-69
Primary industrial supplies n.e.s.(c)	-83	-100	-101	-106	-105	-98	-143	-98	-128	-103
Fuels and lubricants(b)	-1 593	-1 718	-1 923	-1 885	-1 776	-2 311	-2 205	-1 803	-1 967	-1 780
Parts for transport equipment	-622	-589	-627	-632	-625	-661	-632	-666	-689	-686
Parts for ADP equipment	-151	-164	-162	-162	-158	-161	-168	-145	-161	-173
Other parts for capital goods	-865	-864	-837	-846	-933	-873	-884	-895	-900	-919
Organic and inorganic chemicals(c)	-323	-346	-358	-313	-362	-360	-303	-369	-340	-354
Paper and paperboard	-186	-194	-185	-183	-212	-193	-194	-201	-203	-208
Textile yarn and fabrics	-115	-122	-114	-113	-114	-117	-116	-118	-115	-117
Iron and steel	-263	-237	-260	-266	-245	-233	-260	-256	-261	-282
Plastics	-205	-226	-208	-198	-213	-216	-227	-237	-242	-240
Processed industrial supplies n.e.s.	-1 419	-1 302	-1 360	-1 219	-1 365	-1 393	-1 382	-1 413	-1 430	-1 467
Other merchandise goods(b)	-69	-83	-72	-73	-106	-99	-127	-155	-85	-138
<i>Other goods</i>	-488	-636	-497	-547	-793	-946	-748	-738	-447	-580
Goods for processing(b)	-1	-74	-7	-111	-1	-128	-45	-139	-67	-1
Repairs on goods(b)	-6	-4	-7	-6	-7	-13	-7	-14	-13	-17
Goods procured in ports by carriers(b)	-122	-112	-112	-112	-126	-126	-125	-134	-134	-132
Non-monetary gold(d)	-359	-446	-371	-318	-659	-679	-571	-451	-233	-430

(a) For sign conventions, see paragraph 9 of the Explanatory Notes.

(b) These components are not seasonally adjusted.

(c) In using these seasonally adjusted series, care should be exercised because of the difficulties associated with reliably estimating the seasonal pattern.

(d) From October 1995, this component is not seasonally adjusted.

	Dec 2005	Jan 2006	Feb 2006	Mar 2006	Apr 2006	May 2006	Jun 2006	Jul 2006	Aug 2006	Sep 2006
	\$m	\$m	\$m	\$m	\$m	\$m	\$m	\$m	\$m	\$m
<b>Total goods credits</b>	<b>12 714</b>	<b>12 985</b>	<b>13 221</b>	<b>13 424</b>	<b>13 746</b>	<b>13 907</b>	<b>14 047</b>	<b>14 141</b>	<b>14 176</b>	<b>14 232</b>
<i>Rural goods</i>	2 094	2 129	2 154	2 167	2 171	2 176	2 185	2 202	2 220	2 231
Meat and meat preparations	548	555	561	564	566	572	580	589	598	606
Cereal grains and cereal preparations	399	419	434	444	448	452	460	473	487	499
Wool and sheepskins	206	213	219	222	223	221	218	216	215	212
Other rural(a)	941	942	940	937	934	931	927	924	920	914
<i>Non-rural goods</i>	9 803	9 951	10 061	10 157	10 412	10 541	10 673	10 781	10 848	10 944
Metal ores and minerals	2 373	2 420	2 457	2 499	(b)2 702	2 773	2 841	2 887	2 906	2 946
Coal, coke and briquettes	2 066	2 066	2 058	2 047	2 032	2 013	1 988	1 963	1 939	1 917
Other mineral fuels	1 111	1 139	1 154	1 156	1 157	1 164	1 179	1 200	1 219	1 251
Metals (excl. non-monetary gold)	917	956	994	1 034	1 075	1 117	1 157	1 185	1 200	1 209
Machinery	666	671	677	685	691	696	701	707	713	718
Transport equipment	432	426	423	422	419	412	400	386	373	362
Other manufactures	1 261	1 269	1 268	1 261	1 258	1 263	1 277	1 293	1 309	1 324
Other non-rural (incl. sugar and beverages)	977	1 004	1 030	1 053	1 078	1 103	1 130	1 160	1 189	1 217
<i>Other goods</i>	817	905	1 006	1 100	1 163	1 190	1 189	1 158	1 108	1 057
Goods for processing	9	20	37	55	67	70	65	56	45	35
Repairs on goods	6	6	6	5	5	5	6	6	6	6
Goods procured in ports by carriers	112	117	123	128	131	131	130	128	125	123
Non-monetary gold	690	762	840	912	960	984	988	968	932	893

(a) For all time periods, estimates for sugar, sugar preparations and honey are included in Other non-rural.

(b) A trend break of \$150m has been applied to Metal ores and minerals in April 2006.

## GOODS DEBITS(a): Trend Estimates

	Dec 2005	Jan 2006	Feb 2006	Mar 2006	Apr 2006	May 2006	Jun 2006	Jul 2006	Aug 2006	Sep 2006
	\$m	\$m	\$m	\$m	\$m	\$m	\$m	\$m	\$m	\$m
<b>Total goods debits</b>	<b>-14 055</b>	<b>-14 274</b>	<b>-14 483</b>	<b>-14 681</b>	<b>-14 829</b>	<b>-14 940</b>	<b>-14 980</b>	<b>-14 945</b>	<b>-14 885</b>	<b>-14 785</b>
<i>Consumption goods</i>	-4 186	-4 215	-4 242	-4 274	-4 309	-4 350	-4 386	-4 406	-4 414	-4 412
Food and beverages, mainly for consumption	-511	-517	-522	-527	-533	-539	-546	-552	-557	-561
Household electrical items	-358	-369	-378	-383	-383	-380	-377	-374	-372	-371
Non-industrial transport equipment	-1 107	-1 100	-1 101	-1 112	-1 132	-1 157	-1 177	-1 189	-1 195	-1 195
Textiles, clothing and footwear	-544	-546	-546	-546	-548	-552	-557	-560	-560	-558
Toys, books and leisure goods	-333	-341	-348	-354	-356	-356	-354	-351	-349	-348
Consumption goods n.e.s.	-1 333	-1 342	-1 347	-1 352	-1 357	-1 366	-1 375	-1 380	-1 381	-1 379
<i>Capital goods</i>	-3 499	-3 525	-3 504	-3 456	-3 399	-3 354	-3 308	-3 261	-3 226	-3 178
Machinery and industrial equipment	-1 159	-1 191	-1 225	-1 250	-1 262	-1 261	-1 251	-1 235	-1 219	-1 200
ADP equipment	-521	-526	-525	-519	-512	-510	-513	-519	-525	-531
Telecommunications equipment	-473	-492	-502	-500	-486	-468	-452	-441	-433	-426
Civil aircraft	-381	-347	-281	-217	-175	-161	-157	-154	-154	-141
Industrial transport equipment n.e.s.	-465	-471	-475	-471	-459	-442	-425	-414	-411	-414
Capital goods n.e.s.	-500	-498	-496	-499	-505	-512	-510	-498	-484	-466
<i>Intermediate and other merchandise goods</i>	-5 911	-6 018	-6 140	-6 269	-6 385	-6 484	-6 549	-6 582	-6 599	-6 609
Food and beverages, mainly for industry	-53	-53	-52	-52	-53	-55	-58	-61	-64	-67
Primary industrial supplies n.e.s.	-92	-95	-99	-104	-108	-112	-114	-115	-116	-115
Fuels and lubricants	-1 661	-1 739	-1 830	-1 924	-1 999	-2 034	-2 027	-1 994	-1 947	-1 900
Parts for transport equipment	-607	-613	-619	-626	-634	-644	-655	-665	-675	-684
Parts for ADP equipment	-154	-158	-161	-162	-161	-160	-160	-160	-161	-163
Other parts for capital goods	-847	-857	-865	-872	-878	-886	-893	-898	-904	-908
Organic and inorganic chemicals	-331	-336	-341	-344	-343	-343	-344	-345	-347	-350
Paper and paperboard	-192	-191	-191	-192	-194	-197	-199	-201	-203	-205
Textile yarn and fabrics	-116	-117	-116	-116	-115	-115	-116	-116	-117	-117
Iron and steel	-257	-253	-252	-251	-249	-250	-253	-258	-263	-269
Plastics	-210	-210	-210	-210	-213	-219	-225	-232	-239	-244
Processed industrial supplies n.e.s.	-1 313	-1 320	-1 325	-1 330	-1 341	-1 361	-1 389	-1 414	-1 436	-1 458
Other merchandise goods	-78	-76	-79	-86	-97	-108	-116	-123	-127	-129
<i>Other goods</i>	-459	-516	-597	-682	-736	-752	-737	-696	-646	-586
Goods for processing	-20	-32	-45	-59	-71	-78	-80	-76	-69	-55
Repairs on goods	-9	-7	-6	-7	-8	-9	-11	-12	-14	-15
Goods procured in ports by carriers	-118	-117	-116	-117	-120	-124	-128	-131	-133	-134
Non-monetary gold	-312	-360	-430	-499	-537	-541	-518	-477	-430	-382

(a) For sign conventions, see paragraph 9 of the Explanatory Notes.

## SERVICES (a)(b), Summary: Original

							3 MONTHS ENDED		Change
							SEPTEMBER		
	2003-04	2004-05	2005-06	Jul 2006	Aug 2006	Sep 2006	2005	2006	
	\$m	\$m	\$m	\$m	\$m	\$m	\$m	\$m	%
<b>Services credits</b>	<b>37 746</b>	<b>39 695</b>	<b>41 949</b>	<b>3 755</b>	<b>3 810</b>	<b>3 629</b>	<b>10 267</b>	<b>11 194</b>	<b>9.0</b>
<i>Transportation services</i>	7 530	8 002	8 293	731	727	693	2 033	2 151	5.8
Freight	758	704	608	53	53	52	143	158	10.5
Passenger and other	6 772	7 298	7 685	678	674	641	1 890	1 993	5.4
<i>Travel services</i>	20 099	21 440	22 692	2 053	2 111	1 966	5 637	6 130	8.7
<i>Other services</i>	10 117	10 253	10 964	971	972	970	2 597	2 913	12.2
<b>Services debits</b>	<b>-35 696</b>	<b>-39 315</b>	<b>-41 121</b>	<b>-3 730</b>	<b>-3 560</b>	<b>-3 911</b>	<b>-10 416</b>	<b>-11 201</b>	<b>7.5</b>
<i>Transportation services</i>	-11 970	-13 796	-14 509	-1 275	-1 281	-1 360	-3 651	-3 916	7.3
Freight	-6 056	-7 500	-7 776	-604	-685	-677	-1 897	-1 966	3.6
Passenger and other	-5 914	-6 296	-6 733	-671	-596	-683	-1 754	-1 950	11.2
<i>Travel services</i>	-12 527	-14 507	-15 154	-1 471	-1 287	-1 548	-4 058	-4 306	6.1
<i>Other services</i>	-11 199	-11 012	-11 458	-984	-992	-1 003	-2 707	-2 979	10.0
<b>Memorandum items:</b>									
Tourism related service credits(c)	24 072	25 584	26 883	2 422	2 476	2 296	6 687	7 194	7.6
Tourism related service debits(c)	-17 985	-20 287	-21 438	-2 104	-1 845	-2 193	-5 707	-6 142	7.6

(a) For sign conventions, see paragraph 9 of the Explanatory Notes.  
 (b) For more detailed trade in services by commodity, see table 11.

(c) For a more detailed explanation of tourism related services, see paragraphs 15 and 16 of the Explanatory Notes.

	Dec 2005	Jan 2006	Feb 2006	Mar 2006	Apr 2006	May 2006	Jun 2006	Jul 2006	Aug 2006	Sep 2006
	\$m	\$m	\$m	\$m	\$m	\$m	\$m	\$m	\$m	\$m
SEASONALLY ADJUSTED										
<b>Services credits</b>	<b>3 438</b>	<b>3 487</b>	<b>3 548</b>	<b>3 550</b>	<b>3 633</b>	<b>3 636</b>	<b>3 636</b>	<b>3 706</b>	<b>3 724</b>	<b>3 770</b>
Transportation services	679	695	696	703	715	719	710	720	723	726
Freight	49	52	51	52	55	55	55	53	53	53
Passenger and other	630	643	645	651	660	664	655	667	670	673
Travel services	1 855	1 869	1 913	1 912	1 967	1 969	1 974	2 002	2 015	2 048
Other services(b)	904	923	939	935	951	948	952	984	986	996
<b>Services debits</b>	<b>-3 455</b>	<b>-3 476</b>	<b>-3 498</b>	<b>-3 437</b>	<b>-3 481</b>	<b>-3 525</b>	<b>-3 600</b>	<b>-3 580</b>	<b>-3 590</b>	<b>-3 604</b>
Transportation services	-1 249	-1 232	-1 236	-1 266	-1 163	-1 199	-1 264	-1 257	-1 268	-1 256
Freight	-671	-691	-687	-646	-650	-616	-661	-652	-662	-648
Passenger and other	-578	-541	-549	-620	-513	-583	-603	-605	-606	-608
Travel services	-1 262	-1 267	-1 272	-1 186	-1 329	-1 332	-1 339	-1 322	-1 318	-1 338
Other services(b)	-944	-977	-990	-985	-989	-994	-997	-1 001	-1 004	-1 010
<b>Memorandum items:</b>										
Tourism related service credits(c)	2 196	2 204	2 261	2 265	2 326	2 326	2 337	2 373	2 367	2 407
Tourism related service debits(c)	-1 863	-1 765	-1 772	-1 794	-1 814	-1 829	-1 962	-1 854	-1 864	-1 923

TREND ESTIMATES										
<b>Services credits</b>	<b>3 455</b>	<b>3 487</b>	<b>3 527</b>	<b>3 566</b>	<b>3 602</b>	<b>3 635</b>	<b>3 666</b>	<b>3 696</b>	<b>3 724</b>	<b>3 749</b>
Transportation services	683	689	697	704	710	714	717	720	723	724
Freight	50	51	52	53	54	54	54	54	54	53
Passenger and other	633	638	645	651	656	660	663	666	669	671
Travel services	1 862	1 878	1 900	1 924	1 946	1 967	1 985	2 002	2 018	2 033
Other services	910	920	930	938	946	954	964	974	983	992
<b>Services debits</b>	<b>-3 431</b>	<b>-3 466</b>	<b>-3 493</b>	<b>-3 515</b>	<b>-3 532</b>	<b>-3 547</b>	<b>-3 562</b>	<b>-3 578</b>	<b>-3 593</b>	<b>-3 603</b>
Transportation services	-1 230	-1 234	-1 230	-1 225	-1 223	-1 227	-1 235	-1 246	-1 257	-1 265
Freight	-669	-674	-670	-661	-652	-647	-646	-648	-651	-655
Passenger and other	-561	-560	-560	-564	-571	-580	-589	-598	-606	-610
Travel services	-1 248	-1 265	-1 284	-1 303	-1 317	-1 325	-1 329	-1 331	-1 332	-1 331
Other services	-953	-967	-979	-987	-992	-995	-998	-1 001	-1 004	-1 007
<b>Memorandum items:</b>										
Tourism related service credits(c)	2 202	2 219	2 245	2 275	2 303	2 326	2 346	2 364	2 380	2 393
Tourism related service debits(c)	-1 736	-1 756	-1 776	-1 794	-1 810	-1 826	-1 842	-1 860	-1 877	-1 892

(a) For sign conventions, see paragraph 9 of the Explanatory Notes.

(c) For a more detailed explanation of tourism related services, see paragraphs 15 and 16 of the Explanatory Notes.

(b) In using these seasonally adjusted series, care should be exercised because of the difficulties associated with reliably estimating the seasonal pattern.

	CREDITS				DEBITS			
	Dec Qtr	Mar Qtr	Jun Qtr	Sep Qtr	Dec Qtr	Mar Qtr	Jun Qtr	Sep Qtr
	2005	2006	2006	2006	2005	2006	2006	2006
	\$m	\$m	\$m	\$m	\$m	\$m	\$m	\$m
<b>Services</b>	<b>10 464</b>	<b>10 731</b>	<b>10 487</b>	<b>11 194</b>	<b>-10 307</b>	<b>-10 001</b>	<b>-10 397</b>	<b>-11 201</b>
Transportation services	2 086	2 143	2 031	2 151	-3 720	-3 520	-3 618	-3 916
Passenger(c)	1 938	1 995	1 862	1 993	-1 481	-1 349	-1 544	-1 750
Freight	148	148	169	158	-2 030	-1 964	-1 885	-1 966
Other(c)	np	np	np	np	-209	-207	-189	-200
Travel services	5 586	5 873	5 596	6 130	-3 660	-3 590	-3 846	-4 306
Business	507	537	540	574	-567	-674	-653	-656
Personal	5 079	5 336	5 056	5 556	-3 093	-2 916	-3 193	-3 650
Education-related	2 158	2 439	2 660	3 041	-136	-194	-154	-266
Other	2 921	2 897	2 396	2 515	-2 957	-2 722	-3 039	-3 384
Communication services(d)	189	213	186	241	-196	-205	-202	-197
Construction services	36	34	32	26	—	—	—	—
Insurance services	176	176	176	176	-225	-225	-225	-225
Financial services	250	251	251	251	-150	-150	-150	-150
Computer and information services	287	281	316	305	-280	-247	-285	-277
Royalties and license fees	210	178	212	186	-716	-653	-684	-751
Other business services	1 272	1 151	1 304	1 349	-926	-835	-909	-893
Merchanting and other trade-related	198	174	189	173	-57	-40	-41	-42
Operational leasing	7	9	10	12	-196	-211	-199	-207
Miscellaneous business, professional and technical	1 067	968	1 105	1 164	-673	-584	-669	-644
Legal, accounting, management consulting and public relations	160	162	162	161	-78	-59	-70	-64
Advertising, market research and public opinion polling	55	56	67	50	-43	-42	-76	-36
Research and development	109	86	108	120	-49	-51	-44	-52
Architectural, engineering and other technical services	284	305	322	310	-130	-112	-120	-130
Agriculture, mining and on-site processing	47	52	70	138	-34	-36	-52	-47
Services between affiliated enterprises n.i.e.	312	217	275	257	-246	-170	-196	-196
Other	100	90	101	128	-93	-114	-111	-119
Personal, cultural, and recreational services	160	211	155	165	-232	-385	-252	-294
Audiovisual and related services	55	95	34	46	-182	-309	-212	-246
Personal, cultural and recreational services	105	116	121	119	-50	-76	-40	-48
Government services n.i.e.	212	220	228	214	-202	-191	-226	-192
<b>Memorandum items:</b>								
Tourism related services(e)	6 667	6 992	6 537	7 194	-5 235	-5 034	-5 462	-6 142

— nil or rounded to zero (including null cells)

np not available for publication but included in totals where applicable, unless otherwise indicated

(a) For sign conventions, see paragraph 9 of the Explanatory Notes.

(b) For more information see paragraphs 13 and 14 of the Explanatory Notes.

(c) Passenger transportation credits include other transportation services credits.

(d) Communications services includes other services n.i.e.

(e) For a more detailed explanation of tourism related services, see paragraphs 15 and 16 of the Explanatory Notes.

				Per cent of total merchandise exports(a)	3 MONTHS ENDED SEPTEMBER.....	
	Jul	Aug	Sep		2005	2006
	2006	2006	2006			
	\$m	\$m	\$m	%	\$m	\$m
MAJOR COMMODITIES						
011 Meat of bovine animals	403	429	439	3.1	1 159	1 272
041 Wheat	289	362	340	2.4	752	991
268 Wool and other animal hair	203	117	217	1.5	521	537
281 Iron ore and concentrates	1 354	1 319	1 290	9.1	3 001	3 963
285 Aluminium ore and concentrates	570	505	390	2.8	1 149	1 466
321 Coal, not agglomerated	2 028	1 975	1 813	12.8	6 027	5 816
333 Crude petroleum oils	823	506	880	6.2	1 810	2 209
334 Refined petroleum oils	213	347	279	2.0	792	839
343 Natural gas	524	403	330	2.3	966	1 257
684 Aluminium	599	482	509	3.6	1 119	1 590
781 Passenger motor vehicles	140	253	241	1.7	852	635
971 Gold, non-monetary	815	919	799	5.6	1 473	2 532

## SECTION AND DIVISION OF THE SITC

0	Food and live animals(b)					
00	Live animals other than fish, crustaceans, molluscs and aquatic invertebrates	75	87	88	0.6	215 251
01	Meat and meat preparations	579	595	631	4.5	1 672 1 805
02	Dairy products and birds' eggs	191	192	197	1.4	571 579
03	Fish (not marine mammals), crustaceans, molluscs and aquatic invertebrates, and preparations thereof(b)	92	155	91	0.6	358 338
04	Cereals and cereal preparations(b)	445	527	470	3.3	1 012 1 442
05	Vegetables and fruit	154	123	109	0.8	399 387
06	Sugars, sugar preparations and honey(b)	27	19	31	0.2	67 77
07	Coffee, tea, cocoa, spices, and manufactures thereof	21	20	24	0.2	66 65
08	Feeding stuff for animals (excl. unmilled cereals)(b)	66	63	65	0.5	194 194
09	Miscellaneous edible products and preparations	41	37	38	0.3	112 117
	<i>Total Food and live animals</i>	<i>1 692</i>	<i>1 819</i>	<i>1 745</i>	<i>12.3</i>	<i>4 664 5 256</i>
1	Beverages and tobacco					
11	Beverages	234	268	267	1.9	782 769
12	Tobacco and tobacco manufactures	11	11	16	0.1	24 38
	<i>Total Beverages and tobacco</i>	<i>244</i>	<i>279</i>	<i>283</i>	<i>2.0</i>	<i>807 807</i>
2	Crude materials, inedible, except fuels(b)					
21	Hides, skins and furskins, raw(b)	48	55	59	0.4	142 163
22	Oil seeds and oleaginous fruits	18	18	9	0.1	70 44
23	Crude rubber (incl. synthetic and reclaimed)	—	—	—	—	2 1
24	Cork and wood	98	95	89	0.6	236 282
25	Pulp and waste paper	12	13	15	0.1	32 40
26	Textile fibres and their wastes (not manufactured into yarn or fabric)(b)	305	218	327	2.3	922 850
27	Crude fertilisers (excl. those of Division 56) and crude minerals (excl. coal, petroleum and precious stones)	39	46	35	0.3	119 120
28	Metalliferous ores and metal scrap(b)	2 950	2 770	2 660	18.8	5 909 8 380
29	Crude animal and vegetable materials, n.e.s.	19	18	19	0.1	68 57
	<i>Total Crude materials, inedible, except fuels</i>	<i>3 489</i>	<i>3 234</i>	<i>3 215</i>	<i>22.7</i>	<i>7 500 9 937</i>
3	Mineral fuels, lubricants and related materials					
32	Coal, coke and briquettes	2 029	1 986	1 816	12.8	6 032 5 831
33	Petroleum, petroleum products and related materials	1 038	854	1 161	8.2	2 606 3 053
34	Gas, natural and manufactured	599	541	406	2.9	1 259 1 547
	<i>Total Mineral fuels, lubricants and related materials</i>	<i>3 666</i>	<i>3 381</i>	<i>3 383</i>	<i>23.9</i>	<i>9 898 10 430</i>

— nil or rounded to zero (including null cells)

(a) Per cent of total merchandise exports is calculated for the most recent month.

(b) Excludes exports commodities subject to a confidentiality restriction. These are included in Division 98.

				Per cent of total merchandise exports(a)	3 MONTHS ENDED SEPTEMBER.....		
	Jul	Aug	Sep		2005	2006	
	2006	2006	2006				
	\$m	\$m	\$m	%	\$m	\$m	
SECTION AND DIVISION OF THE SITC							
4	Animal and vegetable oils, fats and waxes(b)						
41	Animal oils and fats	15	20	24	0.2	60	59
42	Fixed vegetable fats and oils, crude, refined or fractionated(b)	5	4	11	0.1	14	19
43	Fats and oils (processed), waxes and inedible mixtures or preparations, of animal or vegetable origin, n.e.s.	5	5	5	—	14	16
	<i>Total Animal and vegetable oils, fats and waxes</i>	25	29	40	0.3	88	94
5	Chemicals and related products, n.e.s.(b)						
51	Organic chemicals(b)	6	11	18	0.1	27	36
52	Inorganic chemicals(b)	71	58	43	0.3	133	172
53	Dyeing, tanning and colouring materials	56	49	59	0.4	149	164
54	Medicinal and pharmaceutical products	342	275	303	2.1	865	920
55	Essential oils and resinoids and perfume materials; toilet, polishing and cleansing preparations	39	43	43	0.3	125	125
56	Fertilisers (excl. crude)	9	5	48	0.3	63	62
57	Plastics in primary forms(b)	20	25	27	0.2	88	72
58	Plastics in non-primary forms	30	29	35	0.2	87	94
59	Chemical materials and products, n.e.s.	61	68	66	0.5	171	195
	<i>Total Chemicals and related products, n.e.s.</i>	634	564	643	4.5	1 706	1 841
6	Manufactured goods classified chiefly by material(b)						
61	Leather, leather manufactures, and dressed furskins, n.e.s.	35	39	36	0.3	97	110
62	Rubber manufactures, n.e.s.	18	16	22	0.2	42	56
63	Cork and wood manufactures (excl. furniture)(b)	18	18	14	0.1	56	50
64	Paper, paperboard, and articles of paper pulp, of paper or of paperboard	63	64	62	0.4	167	189
65	Textile yarn, fabrics, made-up articles, nes, and related products	39	37	37	0.3	122	113
66	Non-metallic mineral manufactures, n.e.s.(b)	75	75	99	0.7	223	250
67	Iron and steel(b)	74	93	68	0.5	189	235
68	Non-ferrous metals	1 104	1 071	1 028	7.3	2 050	3 202
69	Manufactures of metals, n.e.s.	80	80	86	0.6	221	246
	<i>Total Manufactured goods classified chiefly by material</i>	1 506	1 494	1 451	10.3	3 165	4 452
7	Machinery and transport equipment(b)						
71	Power generating machinery and equipment	114	121	121	0.9	320	356
72	Machinery specialised for particular industries	126	140	144	1.0	415	410
73	Metal working machinery	16	14	14	0.1	47	43
74	General industrial machinery and equipment, n.e.s. and machine parts, n.e.s.(b)	141	138	149	1.1	392	428
75	Office machines and automatic data processing machines	96	93	92	0.6	293	281
76	Telecommunications and sound recording and reproducing apparatus and equipment	95	77	79	0.6	199	251
77	Electrical machinery, apparatus, appliances, parts (incl. non-electrical counterparts of electrical domestic equipment)	155	153	147	1.0	400	454
78	Road vehicles (incl. air-cushion vehicles)	221	345	314	2.2	1 147	880
79	Transport equipment (excl. road vehicles)	77	84	76	0.5	254	236
	<i>Total Machinery and transport equipment</i>	1 039	1 164	1 136	8.0	3 468	3 339

— nil or rounded to zero (including null cells)

(a) Per cent of total merchandise exports is calculated for the most recent month.

(b) Excludes exports commodities subject to a confidentiality restriction. These are included in Division 98.



				Per cent of total merchandise exports(a)	3 MONTHS ENDED SEPTEMBER	
	Jul	Aug	Sep		.....	
	2006	2006	2006		2005	2006
	\$m	\$m	\$m	%	\$m	\$m
SECTION AND DIVISION OF THE SITC						
8	Miscellaneous manufactured articles(b)					
81	Prefabricated buildings; sanitary, plumbing, heating and lighting fixtures and fittings, n.e.s.					
	12	10	9	0.1	28	31
82	Furniture, parts thereof; bedding, mattresses, mattress supports, cushions and similar stuffed furnishings					
	12	16	12	0.1	34	40
83	Travel goods, handbags and similar containers					
	2	2	3	—	6	6
84	Articles of apparel and clothing accessories					
	22	26	22	0.2	76	70
85	Footwear(b)					
	3	4	4	—	12	11
87	Professional, scientific and controlling instruments and apparatus, n.e.s.					
	135	145	156	1.1	378	436
88	Photographic apparatus, equipment and supplies and optical goods, n.e.s.; watches and clocks					
	31	30	29	0.2	84	90
89	Miscellaneous manufactured articles, n.e.s.					
	195	202	205	1.5	535	602
	<i>Total Miscellaneous manufactured articles</i>					
	412	435	439	3.1	1 153	1 286
9	Commodities and transactions not classified elsewhere in the SITC(c)					
93	Special transactions and commodities not classified according to kind					
	148	93	117	0.8	399	358
95	Gold coin whether or not legal tender, and other coin being legal tender					
	5	3	8	0.1	26	15
96	Coin (excl. gold coin), not being legal tender					
	—	—	—	—	—	—
97	Gold, non-monetary (excl. gold ores and concentrates)					
	815	919	799	5.6	1 473	2 532
98	Combined confidential items excl. some of SITC 280 (exports only) and some of SITCs 510 and 520 (imports only)(c)					
	613	800	886	6.3	1 568	2 299
	<i>Total commodities and transactions not classified elsewhere in the SITC</i>					
	1 580	1 815	1 809	12.8	3 467	5 204
<b>Total merchandise exports</b>						
	<b>14 288</b>	<b>14 215</b>	<b>14 145</b>	<b>100.0</b>	<b>35 916</b>	<b>42 647</b>
Balance of Payments Adjustments						
	171	168	161	. .	393	501
Goods Credits (exports) on a Balance of Payments Basis						
	14 459	14 383	14 306	. .	36 309	43 148

. . not applicable

— nil or rounded to zero (including null cells)

(a) Per cent of total merchandise exports is calculated for the most recent month.

(b) Excludes exports commodities subject to a confidentiality restriction. These are included in Division 98.

(c) Includes exports commodities subject to a confidentiality restriction.

				Per cent of total merchandise imports(a)	3 MONTHS ENDED SEPTEMBER	
	Jul	Aug	Sep		.....	
	2006	2006	2006		2005	2006
	\$m	\$m	\$m	%	\$m	\$m
MAJOR COMMODITIES						
333 Crude petroleum oils	1 012	1 277	1 171	7.8	2 725	3 459
334 Refined petroleum oils	720	654	532	3.5	1 633	1 906
542 Medicaments	560	561	534	3.5	1 554	1 655
641 Paper and paperboard	172	187	197	1.3	525	557
752 Automatic data processing machines	557	503	518	3.4	1 492	1 579
759 Parts and accessories of office machines	180	192	216	1.4	551	589
764 Telecommunications equipment	520	469	481	3.2	1 336	1 470
781 Passenger motor vehicles	1 073	1 059	1 117	7.4	3 129	3 248
782 Motor vehicles for the transport of goods	312	355	420	2.8	1 014	1 087
784 Parts and accessories of motor vehicles	213	245	206	1.4	587	664
792 Aircraft and associated equipment	181	329	210	1.4	739	720
971 Gold, non-monetary	577	207	380	2.5	766	1 163

## SECTION AND DIVISION OF THE SITC

0	Food and live animals					
00	Live animals other than fish, crustaceans, molluscs and aquatic invertebrates	10	13	9	0.1	18 32
01	Meat and meat preparations	23	27	29	0.2	63 78
02	Dairy products and birds' eggs	36	33	34	0.2	96 103
03	Fish (not marine mammals), crustaceans, molluscs and aquatic invertebrates, and preparations thereof	75	89	99	0.7	233 264
04	Cereals and cereal preparations	44	52	52	0.3	125 147
05	Vegetables and fruit	98	104	105	0.7	280 306
06	Sugars, sugar preparations and honey	16	18	22	0.1	53 56
07	Coffee, tea, cocoa, spices, and manufactures thereof	67	81	75	0.5	208 224
08	Feeding stuff for animals (excl. unmilled cereals)	34	29	31	0.2	77 94
09	Miscellaneous edible products and preparations	93	100	88	0.6	299 281
	<i>Total food and live animals</i>	495	545	545	3.6	1 455 1 585
1	Beverages and tobacco					
11	Beverages	78	95	111	0.7	230 284
12	Tobacco and tobacco manufactures	16	18	20	0.1	44 54
	<i>Total beverages and tobacco</i>	94	113	131	0.9	275 338
2	Crude materials, inedible, except fuels					
21	Hides, skins and furskins, raw	—	—	—	—	— —
22	Oil seeds and oleaginous fruits	3	13	4	—	15 20
23	Crude rubber (incl. synthetic and reclaimed)	15	13	16	0.1	36 44
24	Cork and wood	48	50	46	0.3	142 143
25	Pulp and waste paper	26	26	15	0.1	68 67
26	Textile fibres and their wastes (not manufactured into yarn or fabric)	11	14	14	0.1	36 39
27	Crude fertilisers (excl. those of Division 56) and crude minerals (excl. coal, petroleum and precious stones)	9	11	16	0.1	41 36
28	Metalliferous ores and metal scrap	23	101	34	0.2	114 157
29	Crude animal and vegetable materials, n.e.s.	19	22	23	0.2	56 64
	<i>Total crude materials, inedible, except fuels</i>	152	250	167	1.1	507 570
3	Mineral fuels, lubricants and related materials(b)					
32	Coal, coke and briquettes	3	1	1	—	4 5
33	Petroleum, petroleum products and related materials(b)	1 761	1 964	1 727	11.5	4 444 5 452
34	Gas, natural and manufactured	96	64	108	0.7	4 268
	<i>Total mineral fuels, lubricants and related materials</i>	1 860	2 030	1 836	12.2	4 452 5 725

— nil or rounded to zero (including null cells)

(b) Excludes imports commodities subject to a confidentiality restriction. These are included in Division 98.

(a) Per cent of total merchandise imports is calculated for the most recent month.

				Per cent of total merchandise imports(a)	3 MONTHS ENDED SEPTEMBER	
	Jul	Aug	Sep		.....	
	2006	2006	2006		2005	2006
	\$m	\$m	\$m	%	\$m	\$m
SECTION AND DIVISION OF THE SITC						
4	Animal and vegetable oils, fats and waxes					
41	Animal oils and fats	1	1	5	—	4 7
42	Fixed vegetable fats and oils, crude, refined or fractionated	30	47	36	0.2	76 113
43	Fats and oils (processed), waxes and inedible mixtures or preparations, of animal or vegetable origin, n.e.s.	4	5	5	—	12 15
	<i>Total animal and vegetable oils, fats and waxes</i>	35	53	46	0.3	92 135
5	Chemicals and related products, n.e.s.(b)					
51	Organic chemicals	255	241	237	1.6	674 733
52	Inorganic chemicals(b)	77	95	103	0.7	285 275
53	Dyeing, tanning and colouring materials	47	54	52	0.3	141 154
54	Medicinal and pharmaceutical products	650	683	646	4.3	1 918 1 978
55	Essential oils and resinoids and perfume materials; toilet, polishing and cleansing preparations	125	159	147	1.0	399 431
56	Fertilisers (excl. crude)	42	46	53	0.4	180 141
57	Plastics in primary forms	122	141	133	0.9	332 395
58	Plastics in non-primary forms	99	107	108	0.7	281 314
59	Chemical materials and products, n.e.s.	139	159	140	0.9	417 439
	<i>Total chemicals and related products, n.e.s.</i>	1 556	1 684	1 619	10.8	4 627 4 859
6	Manufactured goods classified chiefly by material(b)					
61	Leather, leather manufactures, and dressed furskins, n.e.s.	11	13	10	0.1	38 34
62	Rubber manufactures, n.e.s.(b)	191	210	208	1.4	489 609
63	Cork and wood manufactures (excl. furniture)	48	50	52	0.3	140 151
64	Paper, paperboard, and articles of paper pulp, of paper or of paperboard(b)	216	245	255	1.7	670 717
65	Textile yarn, fabrics, made-up articles n.e.s. and related products	201	234	213	1.4	600 648
66	Non-metallic mineral manufactures, n.e.s.	177	200	212	1.4	572 588
67	Iron and steel(b)	243	288	278	1.8	910 809
68	Non-ferrous metals(b)	120	194	126	0.8	298 440
69	Manufactures of metals, n.e.s.(b)	349	365	396	2.6	1 020 1 110
	<i>Total manufactured goods classified chiefly by material</i>	1 555	1 800	1 750	11.6	4 739 5 105
7	Machinery and transport equipment(b)					
71	Power generating machinery and equipment	281	338	319	2.1	896 937
72	Machinery specialised for particular industries	519	642	595	4.0	1 627 1 756
73	Metal working machinery	59	67	61	0.4	260 186
74	General industrial machinery and equipment, n.e.s. and machine parts, n.e.s.	729	818	795	5.3	2 156 2 342
75	Office machines and automatic data processing machines	787	751	791	5.3	2 191 2 329
76	Telecommunications and sound recording and reproducing apparatus and equipment	821	809	880	5.8	2 317 2 509
77	Electrical machinery, apparatus, appliances, parts (incl. non-electrical counterparts of electrical domestic equipment)(b)	671	758	746	5.0	2 026 2 174
78	Road vehicles (incl. air-cushion vehicles)	1 740	1 819	1 918	12.8	5 204 5 477
79	Transport equipment (excl. road vehicles)	235	382	269	1.8	1 037 886
	<i>Total machinery and transport equipment</i>	5 843	6 383	6 372	42.4	17 713 18 598

— nil or rounded to zero (including null cells)

(a) Per cent of total merchandise imports is calculated for the most recent month.

(b) Excludes imports commodities subject to a confidentiality restriction. These are included in Division 98.

				Per cent of total merchandise imports(a)	3 MONTHS ENDED SEPTEMBER	
	Jul	Aug	Sep		.....	
	2006	2006	2006		2005	2006
	\$m	\$m	\$m	%	\$m	\$m
SECTION AND DIVISION OF THE SITC						
8	Miscellaneous manufactured articles(b)					
81	Prefabricated buildings; sanitary, plumbing, heating and lighting fixtures and fittings, n.e.s.					
	46	58	60	0.4	135	165
82	Furniture, parts thereof; bedding, mattresses, mattress supports, cushions and similar stuffed furnishings					
	187	219	213	1.4	550	619
83	Travel goods, handbags and similar containers					
	47	59	56	0.4	157	162
84	Articles of apparel and clothing accessories					
	396	408	387	2.6	1 122	1 190
85	Footwear					
	106	128	107	0.7	302	341
87	Professional, scientific and controlling instruments and apparatus, n.e.s.					
	349	350	351	2.3	923	1 050
88	Photographic apparatus, equipment and supplies and optical goods, n.e.s.; watches and clocks(b)					
	110	114	114	0.8	357	337
89	Miscellaneous manufactured articles, n.e.s.					
	773	786	891	5.9	2 247	2 451
	<i>Total miscellaneous manufactured articles</i>					
	2 013	2 122	2 179	14.5	5 793	6 314
9	Commodities and transactions not classified elsewhere in the SITC(c)					
93	Special transactions and commodities not classified according to kind					
	3	3	2	—	9	9
95	Gold coin whether or not legal tender, and other coin being legal tender					
	—	—	—	—	1	—
96	Coin (excl. gold coin), not being legal tender					
	—	—	—	—	—	—
97	Gold, non-monetary (excl. gold ores and concentrates)					
	577	207	380	2.5	766	1 163
98	Combined confidential items excl. some of SITC 280 (exports only) and some of SITCs 510 and 520 (imports only)(c)					
	7	12	13	0.1	29	31
	<i>Total commodities and transactions not classified elsewhere in the SITC</i>					
	587	221	395	2.6	805	1 203
	<b>Total merchandise imports</b>					
	<b>14 191</b>	<b>15 201</b>	<b>15 041</b>	<b>100.0</b>	<b>40 458</b>	<b>44 432</b>
	Balance of Payments Adjustment					
	196	233	257	. .	368	687
	Goods Debits (imports) on a Balance of Payments Basis					
	14 387	15 434	15 298	. .	40 826	45 119

. . not applicable

— nil or rounded to zero (including null cells)

(a) Per cent of total merchandise imports is calculated for the most recent month.

(b) Excludes imports commodities subject to a confidentiality restriction. These are included in Division 98.

(c) Includes imports commodities subject to a confidentiality restriction.

	EXPORTS				IMPORTS				BALANCE OF MERCHANDISE TRADE	
	2005-06	September	3 months ended	3 months ended	2005-06	September	3 months ended	3 months ended	2005-06	3 months ended
		2006	September	September		September	2006	September		September
	\$m	\$m	\$m	\$m	\$m	\$m	\$m	\$m		
Belgium	1 036	82	254	249	1 478	142	374	392	-441	-144
Brazil	947	51	280	217	784	72	188	225	163	-8
Canada	1 698	160	402	447	1 993	154	425	476	-295	-29
China	18 133	1 731	4 170	5 151	23 202	2 415	5 795	6 813	-5 069	-1 661
Denmark	200	29	60	59	892	72	223	253	-692	-194
Egypt(b)	504	7	106	60	16	2	4	4	488	56
Fiji	460	39	118	114	175	17	54	49	285	66
Finland	843	100	97	270	818	66	206	200	25	71
France	1 184	89	286	337	5 348	285	1 087	913	-4 164	-576
Germany	1 418	104	390	325	8 677	765	2 260	2 271	-7 260	-1 946
Hong Kong (Sar of China)	2 897	296	671	797	1 651	122	356	406	1 246	391
India	7 406	991	1 957	2 694	1 240	113	316	327	6 166	2 367
Indonesia	3 982	480	1 018	1 334	4 554	371	1 066	973	-571	361
Iran	348	10	71	42	37	3	8	12	311	29
Iraq	171	1	28	92	—	—	—	—	171	92
Ireland	157	18	42	48	1 852	174	483	520	-1 695	-472
Israel	158	14	43	55	615	56	136	157	-456	-102
Italy	1 559	288	325	514	4 187	345	1 138	1 149	-2 627	-635
Japan	31 102	2 701	7 425	8 505	17 334	1 412	4 397	4 322	13 768	4 183
Korea, Republic of	11 748	936	2 848	3 188	6 484	558	1 308	1 465	5 264	1 723
Kuwait	515	44	130	101	242	1	64	55	273	46
Malaysia	2 536	285	586	759	6 754	461	1 537	1 452	-4 218	-693
Mexico	835	60	226	182	937	97	221	288	-102	-106
Netherlands	2 579	205	576	734	1 314	119	323	367	1 265	367
New Zealand	8 747	974	2 341	2 577	5 486	441	1 401	1 396	3 261	1 180
Pakistan	317	55	70	91	147	11	32	34	171	57
Papua New Guinea	1 396	159	338	343	2 318	220	575	535	-922	-192
Philippines	877	67	222	315	806	83	196	205	72	109
Saudi Arabia	2 179	166	442	468	1 210	109	105	209	969	259
Singapore	4 234	475	1 057	1 416	10 556	665	2 306	2 435	-6 322	-1 019
South Africa	2 209	160	517	576	1 618	124	465	394	591	182
Spain	890	146	196	358	1 317	135	380	389	-427	-31
Sweden	422	59	177	138	2 395	159	478	566	-1 973	-427
Switzerland	260	13	50	51	1 571	158	372	491	-1 311	-440
Taiwan	5 907	441	1 399	1 499	3 811	391	931	1 069	2 096	430
Thailand	4 229	354	1 061	1 067	5 388	576	1 244	1 621	-1 160	-554
Turkey	386	24	117	84	354	30	90	87	31	-2
United Arab Emirates	1 647	175	335	407	663	201	103	561	984	-154
United Kingdom	7 793	417	1 199	1 788	5 969	759	1 735	1 729	1 824	59
United States of America	9 784	861	2 227	2 474	22 763	2 014	5 489	6 186	-12 979	-3 712
Viet Nam	915	204	169	655	4 137	498	895	1 534	-3 222	-880
Other Countries	7 846	673	1 890	2 065	6 444	647	1 694	1 904	1 402	161
<b>Total</b>	<b>152 455</b>	<b>14 145</b>	<b>35 916</b>	<b>42 647</b>	<b>167 536</b>	<b>15 041</b>	<b>40 458</b>	<b>44 432</b>	<b>-15 081</b>	<b>-1 786</b>
APEC	109 833	10 267	26 314	30 941	120 113	10 681	28 650	31 741	-10 280	-800
ASEAN	16 900	1 878	4 147	5 577	33 269	2 741	7 513	8 503	-16 369	-2 926
Developing Countries	75 934	7 265	18 216	21 918	77 289	7 161	17 859	20 913	-1 356	1 005
Least Developed Countries	1 537	100	394	353	341	17	52	59	1 197	294
European Union(c)	18 598	1 567	3 738	4 912	36 261	3 198	9 265	9 302	-17 663	-4 390
OECD	83 083	7 314	19 375	22 453	93 787	8 137	23 099	24 189	-10 704	-1 736

— nil or rounded to zero (including null cells)

(a) See Time series spreadsheets for details of all countries.

(b) Exports of Alumina to Egypt are excluded from country total and included in the 'Other Countries' category.

(c) From July 2004, European Union includes 25 member countries.

	2005-06		3 MONTHS ENDED SEPTEMBER	
	September		2005	2006
	2005-06	2006	2005	2006
	\$m	\$m	\$m	\$m
EXPORTS (a)				
New South Wales	26 871	2 270	6 329	7 200
Victoria	18 927	1 814	4 588	5 215
Queensland	35 379	2 950	8 544	9 342
South Australia	9 018	741	2 285	2 181
Western Australia	47 853	4 866	11 077	14 676
Tasmania	2 893	346	645	924
Northern Territory	2 675	450	565	1 163
Australian Capital Territory	9	—	7	—
State not available for publication(b)	710	59	170	214
Re-exports	8 121	649	1 707	1 732
<b>Total exports</b>	<b>152 455</b>	<b>14 145</b>	<b>35 916</b>	<b>42 647</b>
IMPORTS				
New South Wales	64 886	5 801	16 211	17 425
Victoria	49 029	4 367	12 101	12 928
Queensland	24 870	2 337	5 978	6 787
South Australia	6 244	535	1 637	1 566
Western Australia	19 097	1 702	3 761	4 841
Tasmania	516	43	149	171
Northern Territory	2 890	256	618	715
Australian Capital Territory	4	—	2	1
<b>Total imports</b>	<b>167 536</b>	<b>15 041</b>	<b>40 458</b>	<b>44 432</b>

— nil or rounded to zero (including null cells)

(a) State in which the final stage of production or manufacture occurs.

(b) Exports of Alumina to Bahrain, Egypt and Iceland are excluded from the state totals and included in 'State not available for publication category'.

## PERIOD AVERAGE EXCHANGE RATES (a): Per Australian dollar

<i>Period</i>	<i>United States dollar</i>	<i>UK pound sterling</i>	<i>Euro</i>	<i>Japanese yen</i>	<i>Trade-weighted index of value of the \$A(b)</i>
FINANCIAL YEAR					
<b>2003-04</b>	0.7137	0.4102	0.5981	78.91	61.49
<b>2004-05</b>	0.7529	0.4052	0.5918	80.45	62.73
<b>2005-06</b>	0.7474	0.4205	0.6143	85.90	63.26
MONTHS					
<b>2005</b>					
July	0.7524	0.4294	0.6247	84.24	64.00
August	0.7613	0.4244	0.6193	84.25	64.00
September	0.7653	0.4230	0.6244	85.01	64.50
October	0.7539	0.4275	0.6269	86.57	64.30
November	0.7355	0.4236	0.6234	87.04	63.40
December	0.7430	0.4252	0.6265	88.20	63.70
<b>2006</b>					
January	0.7498	0.4248	0.6189	86.55	63.30
February	0.7416	0.4239	0.6203	87.42	62.90
March	0.7277	0.4170	0.6053	85.35	61.80
April	0.7350	0.4165	0.5993	86.09	62.00
May	0.7633	0.4089	0.5982	85.33	63.20
June	0.7402	0.4012	0.5842	84.80	62.00
July	0.7514	0.4075	0.5920	86.89	63.00
August	0.7630	0.4034	0.5958	88.45	63.70
September	0.7566	0.4009	0.5938	88.58	63.20

- (a) These exchange rates and the trade-weighted index are derived using rates provided by the Reserve Bank of Australia in respect of each trading day.
- (b) May 1970 = 100. The Trade-weighted index is reweighted annually on 1 October and on special occasions as required.

## EXPLANATORY NOTES

### INTRODUCTION

**1** This publication presents preliminary estimates of Australia's international trade in goods and services on a balance of payments basis and merchandise import and export statistics on a recorded trade basis.

**2** Merchandise trade statistics on a recorded trade basis are compiled from information submitted by exporters and importers or their agents to the Australian Customs Service (ACS). Adjustments for coverage, timing and valuation are made to recorded trade data to convert them to a balance of payments basis. The main source for services data is the quarterly Survey of International Trade in Services.

**3** More comprehensive quarterly estimates of Australia's trade in goods and services, together with comprehensive details of Australia's balance of payments are included in the quarterly publication, *Balance of Payments and International Investment Position, Australia* (cat. no. 5302.0). Detailed monthly statistics on merchandise trade are available on AusStats or by subscription to tailored services.

### CONCEPTS, SOURCES AND METHODS

**4** The conceptual framework used in compiling Australia's merchandise trade statistics can be found in *International Merchandise Trade, Australia: Concepts, Sources and Methods, 2001* (cat. no. 5489.0).

**5** The conceptual framework used in compiling Australia's balance of payments statistics is based on the Fifth Edition of the International Monetary Fund's *Balance of Payments Manual* (BPM5,1993). Descriptions of the underlying concepts and structure of the balance of payments and the sources, methods and terms used in compiling the estimates are presented in *Balance of Payments and International Investment Position, Australia: Concepts, Sources and Methods, 1998* (cat. no. 5331.0). To bring merchandise trade statistics on a recorded trade basis to a balance of payments basis, timing adjustments are made to ensure that the transaction is recorded in the period in which ownership changed, rather than in the period in which the transaction was recorded by ACS. Adjustments are also made to imports to take account of distortions which arise when significant changes occur in the volume of import entries lodged but not yet processed by ACS in a given month. Chapter 6 of cat. no. 5331.0 provides more detail on the relationship between statistics on international merchandise trade on a recorded trade basis and on a balance of payments basis.

**6** Both of the Concepts, Sources and Methods publications are available to download for free from the ABS website. Select *Methods, Classifications, Concepts & Standards*, then choose *ABS concepts, classifications and statistical standards* and then the catalogue numbers as above.

### SEASONAL ADJUSTMENT

**7** Monthly original estimates are volatile, being subject to calendar-related and large irregular influences. Seasonally adjusted estimates are derived by estimating and removing systematic calendar related effects, such as seasonal and trading day influences, from the original series. Trading day effects are removed from the original estimates prior to the seasonal adjustment process. Seasonal adjustment does not aim to remove the irregular or non-seasonal influences which may be present in any particular month. These irregular influences may reflect both random economic events and difficulties of statistical recording. The estimates of international trade in goods and services on a balance of payments basis are seasonally adjusted. The merchandise exports and imports statistics on a recorded trade basis are not.

### TREND ESTIMATES

**8** The month-to-month movements of the seasonally adjusted estimates may not be reliable indicators of trend behaviour because they include irregular or non-seasonal movements. Trend estimates are derived by applying a 13-term Henderson moving average to the seasonally adjusted series. The use of a 13-term Henderson average can result in revisions to the estimates for the most recent six months as additional



## EXPLANATORY NOTES *continued*

### TREND ESTIMATES *continued*

observations become available. Revisions can also occur because of changes in the original data and as a result of the annual re-estimation of the seasonal factors.

### SIGN CONVENTION

**9** In keeping with balance of payments conventions, where statistics are on a balance of payments basis, credit entries (exports) are shown without sign and debit items (imports) are shown as negative entries. For statistics on a recorded trade basis, both imports and exports are shown without sign. The calculation of percentage changes on balance of payments debit items are made without regard to sign. References to balance of payments debit items in Key Figures, Key Points, and Analysis and Comments are also made without regard to sign.

### COMMODITY BREAKDOWNS OF GOODS

**10** For details of the classification used for goods exports on a balance of payments basis (credits), see table 6.6 in *Balance of Payments and International Investment Position, Australia: Concepts, Sources and Methods, 1998* (cat. no. 5331.0).

**11** Details of the classification of goods imports on a balance of payments basis (debits) are provided in table 6.7 in cat. no. 5331.0. Goods debits sub groups at a more detailed level than shown in Table 4 are available from the Time series spreadsheets.

**12** The recorded trade statistics shown in tables 12 and 13 are classified by the Standard International Trade Classification 2 (SITC). The first section of tables 12 and 13 show the most significant commodities (by value) at the SITC 3 digit level.

### COMMODITY BREAKDOWNS OF SERVICES

**13** The quarterly detailed services data published in table 11 are consistent with the monthly aggregates shown in table 9.

**14** Monthly indicators for many of the services components that are only surveyed quarterly are not available. In particular, the Freight and Other transportation components of Total services credits are not available for publication on a monthly basis. The estimates for these items shown in table 9 are therefore derived by dividing the quarterly estimate by three. Where quarterly survey data are not available, freight debits are derived directly from imports data for the reference month as a difference between total merchandise cost, insurance and freight (CIF) and free on board (FOB), adjusted to reflect timing and processing adjustments. For freight credits and other transportation credits and debits, estimates are derived by extrapolating the last month's data by an average of movements for the same month over the three previous years.

### TOURISM RELATED SERVICES

**15** The tourism related services memorandum items provide timely indicators of the movements in tourism related activities, not an absolute measure of the level of these activities. These series are not compiled on a balance of payments conceptual basis. However, they do provide a reasonable approximation of world tourism related activities.

**16** The memorandum items have been derived by re-aggregating relevant components of the international trade in services series of the balance of payments accounts. The tourism related indicator has been derived by combining total travel services (business, education-related and other personal travel), passenger fares, and the air transport component of other transportation services which relates to agency fees and commission receipts.

### SERVICES BY STATE AND BY PARTNER COUNTRY

**17** Annual services data by state and by partner country are released twice yearly. Calendar year data are released with the March issue of this publication and financial year data are released with the September issue. The data are available from Time series spreadsheets and data cubes.

**18** Services credits are classified by the state of provision, while services debits are classified by the state of consumption. The state allocations for transportation, travel and communication services are based on a number of indicators including merchandise trade statistics by state, overseas passenger arrivals and departures by state of clearance

## EXPLANATORY NOTES *continued*

### SERVICES BY STATE AND BY PARTNER COUNTRY *continued*

and data provided by the Department of Education, Science and Training. The allocation for other services (about 25% of all trade in services) is primarily based on the location of the business reporting the information, which serves as a proxy for the state of provision/consumption of that service. The data should be used with care but are considered suitable for analysis over time.

**19** A comprehensive explanation of the data sources used and the methodology applied in the compilation of partner country statistics is provided in Chapter 17 of *Balance of Payments and International Investment Position, Australia - Concepts, Sources and Methods* (cat. no. 5331.0). Approximately 8% of total services credits and 6% of total services debits for 2004–05 are either confidential, or unable to be allocated to individual countries.

### ABS DATA AVAILABLE

**20** More detailed balance of payments and recorded merchandise trade data, including forward seasons factors are available as time series spreadsheets from the ABS website.

**21** More detailed merchandise trade data by commodity, country and state, and statistics included in this and related publications are available on request. Inquiries should be made to the National Information and Referral Service as shown on the back of this publication.

### RELATED PRODUCTS AND PUBLICATIONS

**22** Users may also wish to refer to the following publications which can be downloaded free of charge from the ABS web site:

- *Balance of Payments and International Investment Position, Australia* (cat. no. 5302.0) – issued quarterly
- *International Merchandise Imports, Australia* (cat. no. 5439.0) – issued monthly
- *International Trade Price Indexes, Australia* (cat. no. 6457.0) – issued quarterly
- *Balance of Payments and International Investment Position, Australia: Concepts, Sources and Methods* (cat. no. 5331.0)
- *Information Paper: Quality of Australian Balance of Payments Statistics* (cat. no. 5342.0)
- *International Merchandise Trade, Australia: Concepts, Sources and Methods* (cat. no. 5489.0)
- *A Guide to Australian Balance of Payments and International Investment Position Statistics* (cat. no. 5362.0.55.001).

**23** Current publications produced by the ABS are listed in the Catalogue of Publications and Products (cat. no. 1101.0). The Catalogue is available from any ABS office or from this site. The ABS also issues a daily Release Advice on the web site which details products to be released in the week ahead.

### CAUTIONARY NOTE

**24** The tables in this publication are presented on two bases. Tables 1–11 contain estimates of Australia's international trade in goods and services which have been adjusted for coverage, valuation and timing to a balance of payments basis. Tables 12–15 contain estimates of merchandise exports and imports based on Australian Customs Service records. Paragraph 5 of the Explanatory Notes provides an explanation of the difference between these bases.

## EXPLANATORY NOTES *continued*

---

### ABBREVIATIONS

\$b	billion (thousand million) dollars
\$m	million dollars
ABS	Australian Bureau of Statistics
APEC	Asia Pacific Economic Co-operation
ASEAN	Association of South-East Asian Nations
n.e.s.	not elsewhere specified
n.i.e.	not included elsewhere
OECD	Organisation for Economic Co-operation and Development
SAR	Special Administrative Region
SITC	Standard International Trade Classification

## APPENDIX RELATED ARTICLES

<i>Article</i>	<i>Source(a)</i>	<i>Issue</i>
<b>Investment</b>		
Foreign ownership of equity	5302.0	Dec qtr 2005
Kangaroo bonds	5302.0	Sep qtr 2004
Gross external debt	5302.0	Sep qtr 2003
Measuring Australia's foreign currency exposure	5302.0	Dec qtr 2001
<b>Balance of payments</b>		
International comparison of balance of payments statistics	(b) 5363.0	1999–2000
The Sydney Olympic Games Update	5368.0	Jul 2000
The Sydney Olympic Games	5302.0	Sep qtr 1999
<b>Merchandise trade</b>		
Number and characteristics of Australian exporters, 2005–06	5368.0.55.006	2005–2006
New methodology for deriving counts of Australian exports	5368.0	Feb 2006
Export and Import Invoice Currencies, 2005	5368.0	Jun 2005
Australia's Importers, 2003–04	5368.0	Nov 2004
Australia's Exporters, 2003–04	5368.0	Oct 2004
Australia's Trade with the USA	5368.0	Mar 2004
Trade through Australia's ports	5422.0	Sep qtr 2002
Australia's trade in wine	5422.0	Dec qtr 2001
Australia's export markets, 1991–92 to 2000–01	5422.0	Jun qtr 2001
Major commodities traded by Australia, 1991 to 2000	(b) 5422.0	Dec qtr 2000
Australia's trade in crude petroleum	5422.0	Mar qtr 2000
Australia's merchandise trade with the Republic of Korea	5422.0	Sep qtr 1999
Australia's merchandise trade with Japan	5422.0	Mar qtr 1999
Bilateral merchandise trade statistics reconciliation: Australia and the European Union, 1992 to 1997	5422.0	Sep qtr 1998
<b>Trade in services</b>		
Changes to International Trade in Services Statistics, August 2006	5368.0	Aug 2006
International trade in services by partner country, 2005, preliminary	5368.0	Dec 2005
Changes to International trade in services travel statistics	5368.0	Aug 2005
International trade in education services	5302.0	Sep 2001
<b>Finance</b>		
Impact of 2003–2004 farm season on Australian production	1350.0	Oct 2003
Recent trends in construction and first home buyers finance	5609.0	Mar 2002
Household sector data in the financial accounts	5232.0	Mar qtr 2002
Investment Managers	5655.0	Jun qtr 2000
Venture capital, 1999–2000	5611.0	2000–01
<b>Technical information</b>		
Proposed classification changes from 1 January 2007 to statistical codes of the Australian Harmonized Export Commodity Classification and the Harmonized System tariff	5368.0.55.007	Sep 2006
ABS implementation in January 2007 of revisions to international trade classifications, 2007	5368.0.55.005	June 2006
Revised Treatment of Goods for Processing in Merchandise Trade and Balance of Payments Statistics	5368.0	May 2006
Impact of Customs and ABS changes on import statistics from October 2005	5439.0	Oct 2005
ABS Management of the Impact of the Implementation of the Imports Component of the New Customs System	5439.0	Aug 2005
Changes to country and port classifications	5368.0	May 2003
Implementation of New Customs Systems	5368.0	Aug 2004
The effect of customs changes on export statistics	5422.0	Jun qtr 2002
Harmonized system changes	5422.0	Sep qtr 2001
International trade review: data quality and client queries	5422.0	Jun qtr 2000
Data confidentiality	5422.0	Dec qtr 1999

(a) In the ABS web site home page, select Key Products; Papers & Articles; ABS Articles; Feature Articles by Catalogue Number.

(b) This article can be found in pdf format by referring to the Details page of the specified issue of this publication on the ABS web site and click on Download Now.







## FOR MORE INFORMATION . . .

*INTERNET* **www.abs.gov.au** the ABS web site is the best place for data from our publications and information about the ABS.

*LIBRARY* A range of ABS publications are available from public and tertiary libraries Australia wide. Contact your nearest library to determine whether it has the ABS statistics you require, or visit our web site for a list of libraries.

## INFORMATION AND REFERRAL SERVICE

Our consultants can help you access the full range of information published by the ABS that is available free of charge from our web site, or purchase a hard copy publication. Information tailored to your needs can also be requested as a 'user pays' service. Specialists are on hand to help you with analytical or methodological advice.

*PHONE* 1300 135 070

*EMAIL* [client.services@abs.gov.au](mailto:client.services@abs.gov.au)

*FAX* 1300 135 211

*POST* Client Services, ABS, GPO Box 796, Sydney NSW 2001

## FREE ACCESS TO STATISTICS

All ABS statistics can be downloaded free of charge from the ABS web site.

*WEB ADDRESS* [www.abs.gov.au](http://www.abs.gov.au)



2536800009069

ISSN 1328 2778

RRP \$26.00